

Mild Steel Multi-Mount

MAD

Wall mounting enclosures, double door

The Multi-Mount range of mild steel wall mounting enclosures is also available in double door versions, and complies with IP55. There are seven sizes available, and a range of accessories. The standard finish is RAL7035, although other colours and sizes are available on request.



IP 55/NEMA 12 IK10



Technical data

Material: Body: 1.4mm mild steel MAD0608030R5 / 1.5mm MAD1001030R5 and above. Gland plate: 1.4mm mild steel. Doors: 1.4mm mild steel / 1.8mm MAD0801230R5 and above. Mounting plate: 2mm galvanised steel / 2.5mm MAD1001030R5 and above.
Body: Folded and seam welded. Four 8.5mm diameter holes for wall fixing, pressed out in 20.4mm diameter x 2mm depressions to allow air circulation around the rear part of the enclosure.
Door: Surface mounted with 130° opening. Concealed removable hinges with captive pin. Two removable mounting profiles in the right hand door. Sealing is ensured by an extruded one piece polyurethane gasket.
Lock: Customised lock with double grip for easy opening of the door, DIN 3mm insert and 90° movement. Espagnolette three point locking. Other inserts are available as an accessory.

Mounting plate: The mounting plate is marked vertically at 10mm intervals for easy horizontal positioning of equipment. On the top and bottom are holes to facilitate cable fixing. Fixed onto M8 press welded studs to the rear of the enclosure. All sides from 800mm and above are strengthened by folded edges. By using the AMG accessory the mounting plate position can be adjusted to any depth.
Gland Plate Opening: Situated at the far rear of the enclosure to make the cabling onto the mounting plate easier.
Protection: Complies with IP 55 and NEMA 12. For outdoor installation the assembly of rain hood ARF is recommended.
Finish: RAL 7035 structure powder coating.
Delivery: Enclosure with doors, and two door mounting profiles on the right door. Gland plate(s) with gasket(s), plastic DIN 3mm key, and mounting accessories. Earthing facilities.

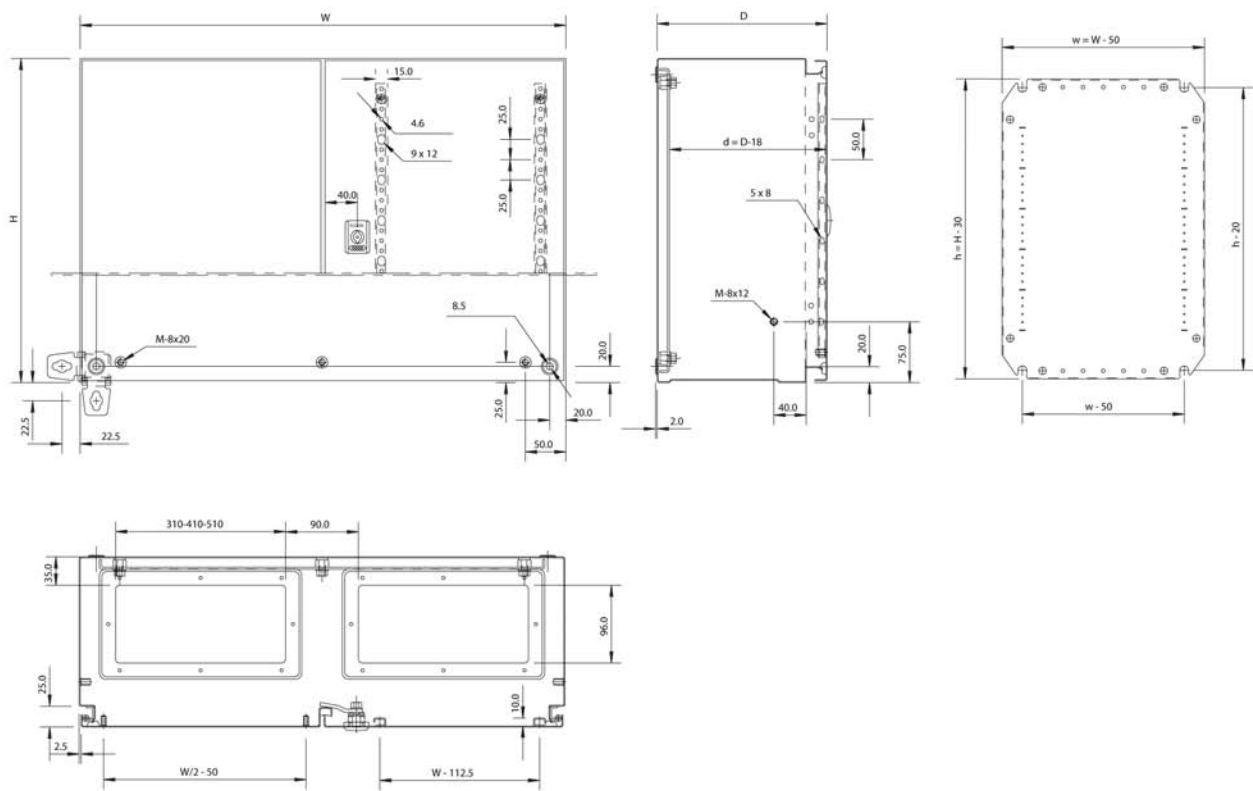


With mounting plate

Enclosure dimension			Mounting plate dimension				Size	Type	Openings	N° of locks	Weight	Part No.
H	W	D	h	w	d							
800	1200	300	770	1150	282	510x96	4	2	1*	48,0	MAD0801230R5	
1000	1000	300	970	950	282	410x96	3	2	1*	63,0	MAD1001030R5	
1200	1000	300	1170	950	282	410x96	3	2	1*	74,0	MAD1201030R5	
1400	1000	300	1370	950	282	410x96	3	2	1*	84,0	MAD1401030R5	

* 3 point espagnolette locking.

Dimensions



Accessories for wall mounting enclosures

AW, Wall mounting brackets



Description: Mounting brackets for safe wall fixing. It includes the sealing washers to guarantee the IP rating.

Material: AW41: 3 mm zinc plated steel AWS41: Chrome plated 4mm.

Pack. quantity: 4 brackets with mounting accessories.

Part No.
AW41
AWS41

ADO, Door stop



Description: To secure the door in an open position allowing a 90° or 110° opening. Mounted directly to the door profile. Drilling is required.

Material: Zinc plated steel.

Pack. quantity: 1 piece with mounting accessories.

Part No.
ADO201

AMG, Depth adjust kit



Description: To provide depth adjustment for different accessories: mounting plate, 19" profiles and modular support.

Material: 2mm galvanised steel.

Pack. quantity: 2 pairs with mounting accessories.

Enclosure dimension		Part No.
D		
155		AMG155
210		AMG210
260		AMG260
300		AMG300

DRA, Document pocket



Description: Self adhesive, for DIN A4.

Usable depth: 30 mm

Material: Thermoplastic

Colour: Grey, RAL 7035.

Pack. quantity: 1 Document pocket with double sided tape

Part No.
DRA04

ALL, Locks



Description: Alternative locks to replace the standard one.

Pack. quantity: 1 piece.

Description	Type	Part No.
Polyamide cylinder lock	Key 333	ALL509