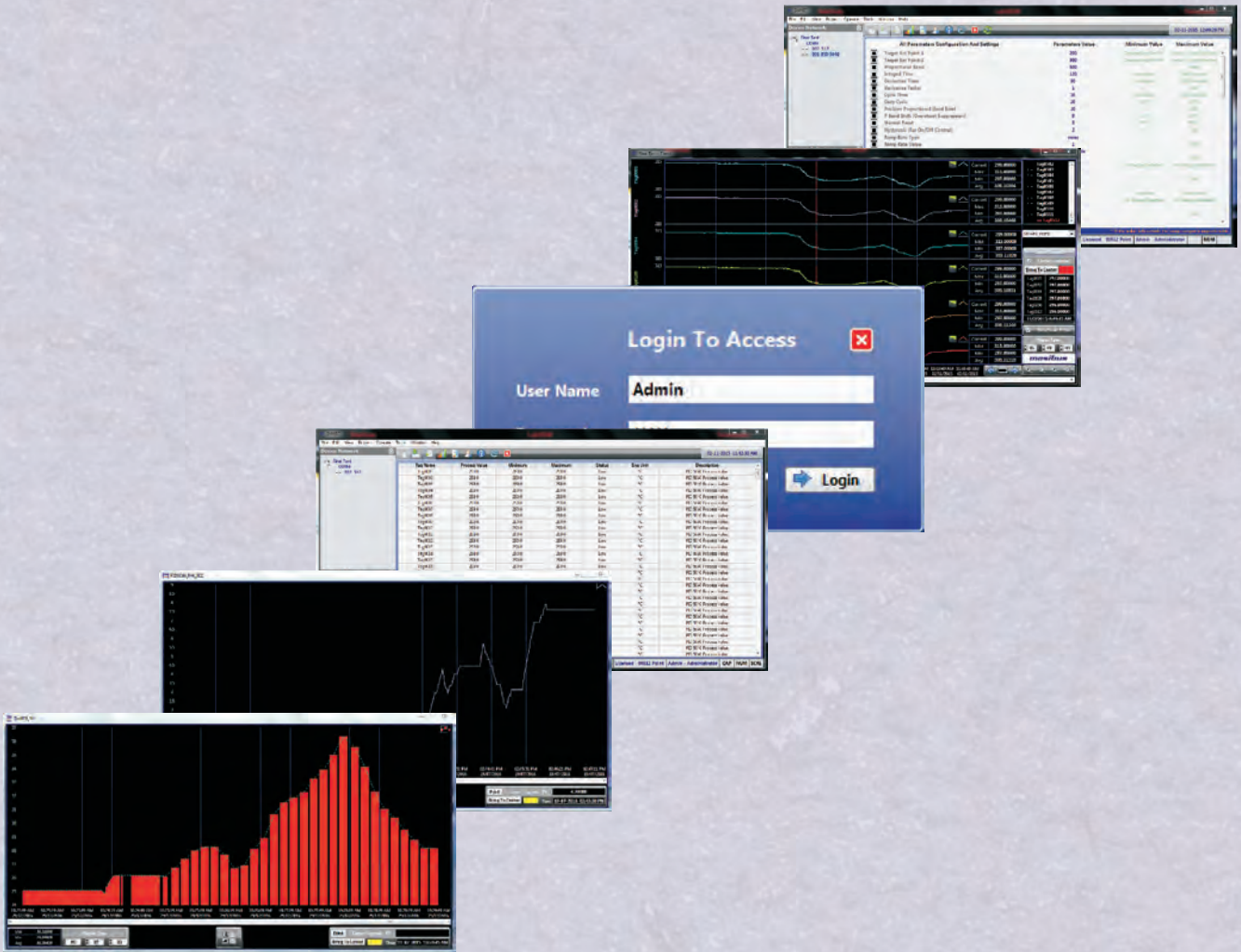


masibus[®]

Advanced Automation - Sure Solutions

smart

Scalable Monitoring Archiving & Reporting Tool



ONLINE MONITORING,
DATALOGGING AND REPORTING

SUPPORTS THIRD
PARTY MODBUS
(RS485/ TCP-IP) DEVICES

AUTO DISCOVERY
OF MASIBUS DEVICES

REAL TIME TREND/
HISTORIC TREND DISPLAY

AUTO TAG GENERATION
OF MASIBUS DEVICES

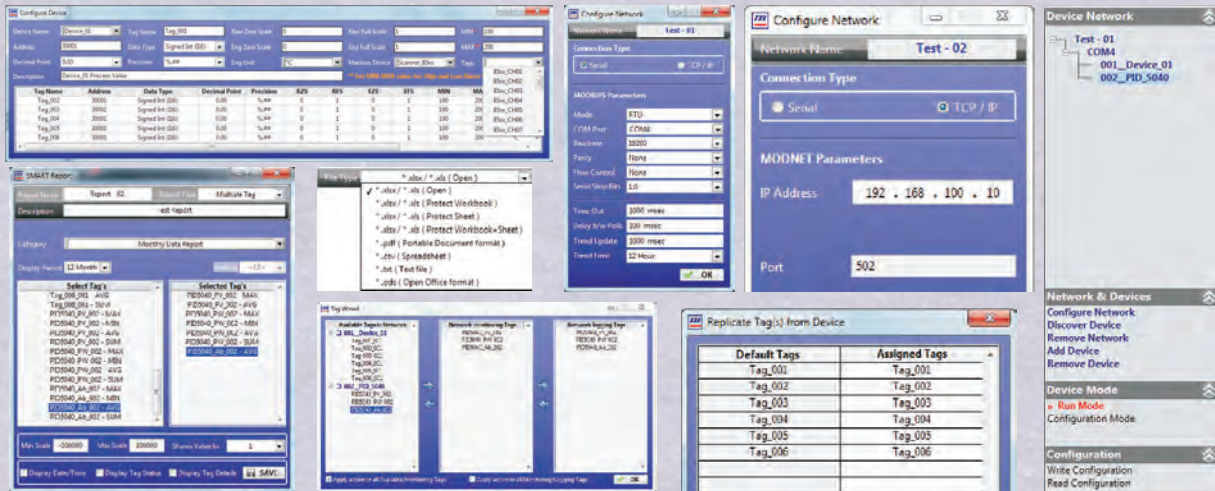
MULTIPLE PRE - BUILT
REPORT OPTIONS

MASIBUS AUTOMATION AND INSTRUMENTATION PVT. LTD.

E-mail: sales@masibus.com Web: www.masibus.com

Tel.: +91 79 23287275 - 79 Fax: +91 79 23287281

smot Software Scalable Monitoring Archiving & Reporting Tool



Features

- Out-of-the-box application to quickly and easily acquire, view and log data
- User friendly, Fully configurable, Highly scalable, No programming required
- Configure devices, channels, and acquisition options
- A simplified network device interface and data rate configuration support
- Independently set scale units, including the ability to change engineering units
- Save the network configuration to a file for reuse, modification and duplication
- Designed to streamline the process of downloading data and reviewing it in a user-friendly, time efficient manner
- Time stamped data logging facilities
- Easily configurable reports for in-depth analysis and displays like
 - Tabular display
 - Trend display
 - Bar graph
 - Line graph
- Historical trend view and reporting facility
- Various pre-defined report templates
- User selectable exports to .xls, .xlsx, .pdf, .csv, .txt and .ods file after data acquisition
- Three level security for software accessibility: Administrator, Supervisor and Operator
- Supported Operating Systems: Windows® 10/ 8.1/ 8/ 7/ 32-bit or 64-bit
- Free version available with limited no. of access points (006)
- The SMART licence is available for 064 to 512 points

Applications

- Simple PC based data logging
- Process/ Electrical parameters reporting and monitoring
- Energy monitoring and reporting
- Production reporting
- Machine efficiency analysis (OEE and other parameters)
- Environmental data logging
- Machine Condition monitoring

System Requirement

Before you install the application verify that you have at least the following.

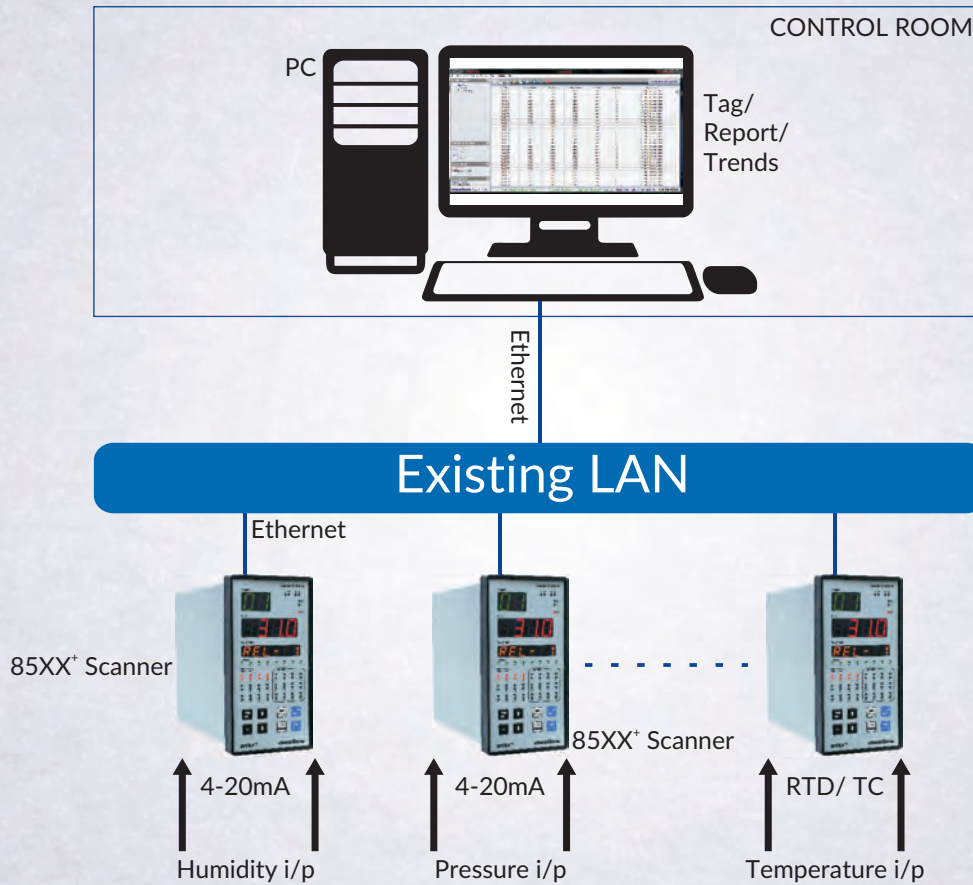
Hardware

- Computer:** Pentium III / Celeron 866 MHz (or equivalent) or later (32-bit) Pentium 4 G1 (or equivalent) or later (64-bit)
- Processor:** 1 GHz or faster processor
- Memory:** 1 GB (recommended 2 GB)
- Hard Disk:** 4.5 GB of available hard disk space (x86)
4.5 GB of available hard disk space (x64)
- Monitor:** Resolution should be set at 1280 x 768 Pixels (recommended 1366 x 768)
- Color Palette:** Software contains 16-bit color graphics. It requires a minimum color palette setting of 16-bit color.

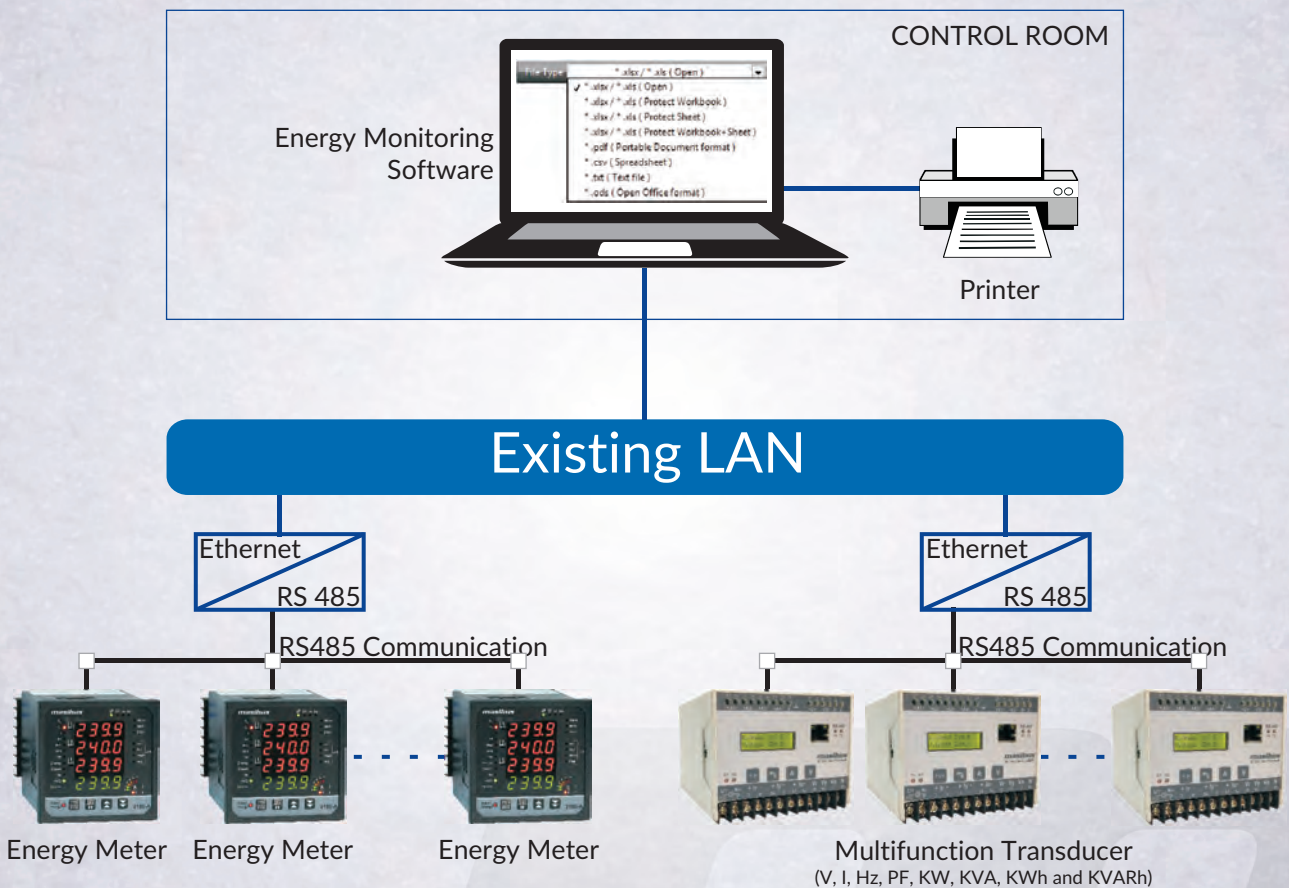
Software

- Operating System:** Windows 7 (32 and 64-bit)
Windows 8 (32 and 64-bit) / 8.1 (32 and 64-bit)
Windows 10 (32 and 64-bit)
Windows server 2003 (32-bit)
Windows server 2008 R2 (64-bit)
Windows server 2012 R2 (64-bit)
- Additional Software Requirement:** Acrobat Reader 10 or higher version
Microsoft Office 2013/ 2010/ 2007/ 2003
Microsoft .NET Framework 4.0 or higher version required

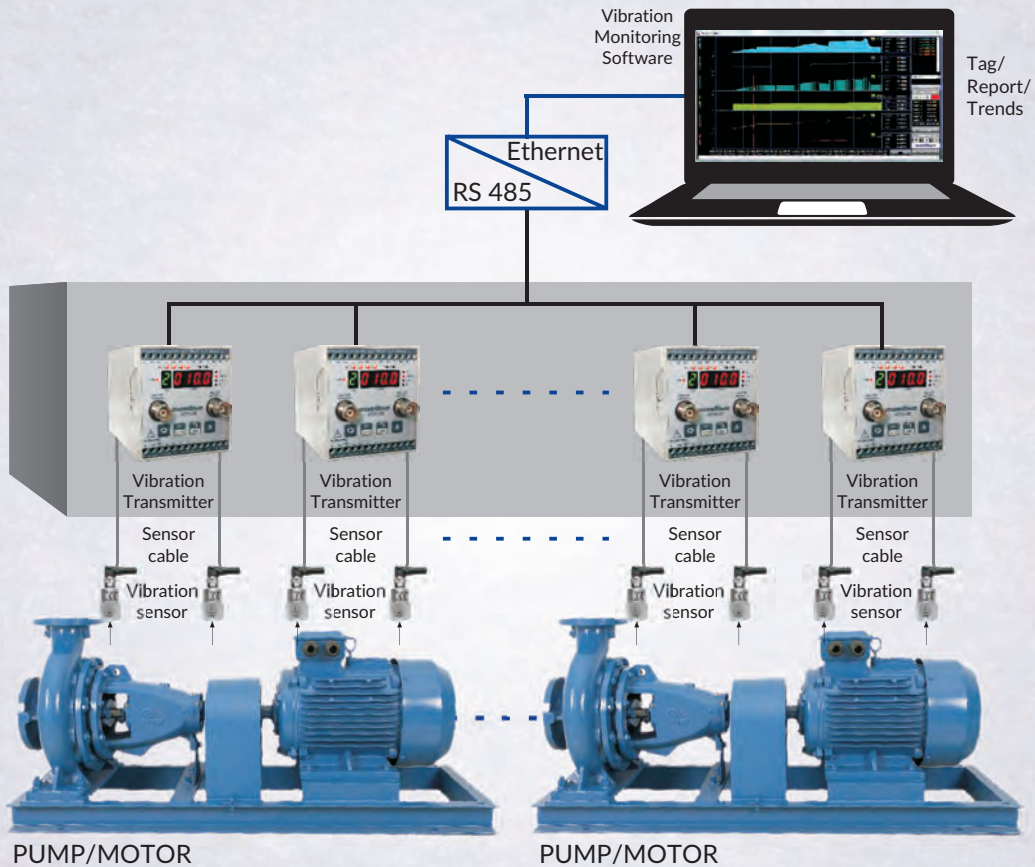
Data Monitoring & Logging



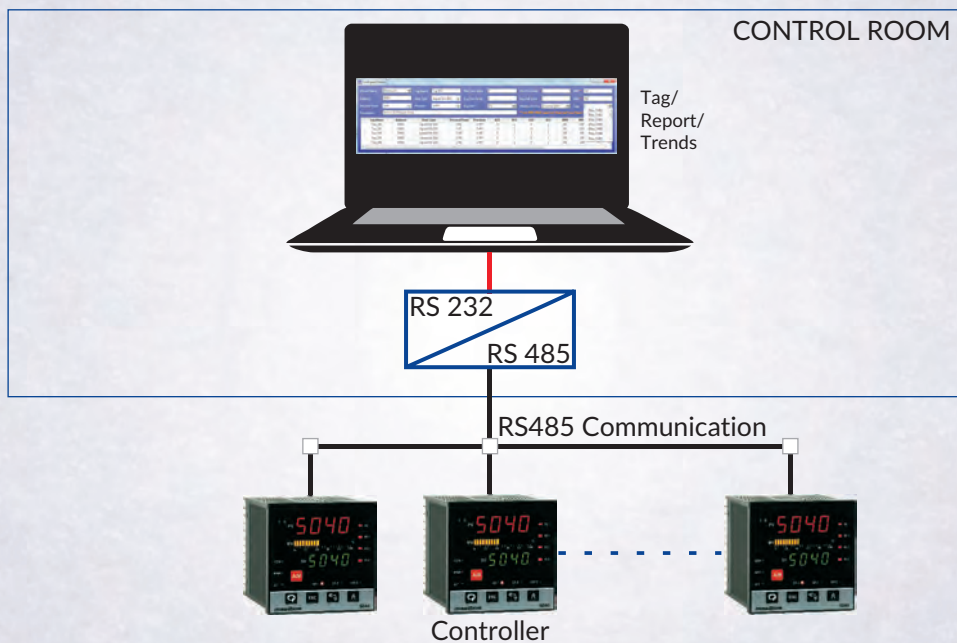
Energy Monitoring & Reporting



Vibration/ Machine Condition Monitoring



Configuration & Monitoring



Ordering code

Model	No of points
SMART	XXX
	064 64 Points
	128 128 Points
	256 256 Points
	512 512 Points

E-mail: sales@masibus.com

masibus
Advanced Automation - Sure Solutions