

Digital Clamp Meter

Rish Clamp Power 1000 A AC/DC

Rish Clamp Power 400 A AC/DC



Product
Presentation

Prepared by -
Loveesh Jaiswal
Product Manager



Index

Introduction

Salient Features

Technical Details Snapshot

Standards & Approvals

Benefits to Customers

Applications

Strictly for Internal Circulation



Introduction

- **Power Clamp meter** designed for Power Quality testing & maintenance applications with **CAT IV** compliance
- Available in two current ranges of **1000 A** and **400 A**
- Measures important power parameters like **kWh, Power Factor, Active-Reactive-Apparent Power & Harmonics**
- It also features **AC & DC Current, THD, Horse Power, Inrush, Peak** and **Three Phase (Balanced & Unbalanced) Power** measurement



What it does?



Non Contact Voltage Detection



Energy Measurement



Power Measurement



Inrush Current Measurement



Salient Features

- **Large** Jaw Opening
- Rotating clamp jaws & Safety Trigger
- **Active, Reactive** and **Apparent** Power
- Measure up to **49th** Harmonics
- **3Ø 3Wire** & 3Ø 4Wire Power Measurement
- **Advanced Data Hold** Function
- **Low Pass Filter (LPF)** Mode for VFD Applications
- Non contact voltage (**NCV**) detection
- **Inrush**/Peak Value Measurement
- 600 V CAT IV/1000V CAT III

Voltage Measuring Range

	Meas. Range	Intrinsic Error (%)
V DC	999.9 V	$\pm(0.5\% \text{ of rdg} + 5 \text{ dgt})$
V~	999.9 V	$\pm(0.75\% \text{ of rdg}+5 \text{ dgt})$
V ACDC	999.9 V	$\pm(1.25\% \text{ of rdg}+10\text{dgt})$

Current Measuring Range

	Meas. Range	Intrinsic Error (%)
POWER CLAMP 1000 A ADC-AAC	999.9 A	1.5% of rdg + 5 digit
POWER CLAMP 400 A ADC-AAC	99.99 A	1.5% of rdg + 0.2 A
	400 A	1.5% of rdg + 5 digit
POWER CLAMP 1000 A AACDC	999.9 A	3% of rdg + 10 digit
	99.99 A	3% of rdg + 0.4 A digit
POWER CLAMP 400 A AACDC	400 A	3% of rdg + 10 digit

Technical Details Snapshot

Low Pass Filter Range

	Meas. Range	Intrinsic Error (%)
POWER CLAMP LPF 1000A AC	999.9 A	50.....60 Hz : 1.5% of rdg + 5 digit 61.....400 Hz : 5% of rdg + 5 digit
POWER CLAMP LPF 400 A AC	99.99 A	50.....60 Hz : 1.5% of rdg + 0.3 A 61.....400 Hz : 5% of rdg + 5 digit
	400 A	50.....60 Hz : 1.5% of rdg + 5 digit 61.....400 Hz : 5% of rdg + 5 digit
LPF V~	9999.9 V	50.....60 Hz : 0.75% of rdg + 5 digit 61.....400 Hz : 5% of rdg + 5 digit



Technical Details Snapshot

Display

Display/ Character Ht.	7-segment digits
Character Height	Main Display : 11.5mm Sub Display : 7.2mm
Digits/ Counts	4 digit/ 9999 counts
Over range indication	“OL” is displayed

Mechanical Configuration

Dimensions	90mm (W) x 270mm (L) x 70mm (H)
Weight	0.5 Kg

Environmental Conditions

Operating temperature	0 to +55°C
Storage temperature	-20 to +70°C
Temp. Coefficient	0.15 X (Intrinsic Error) / °C
Relative humidity	0...75% non condensing
Terminal Protection	IP 50 for Housing and IP20 for terminals

Standards & Approvals

Applicable Standards

EMC	IEC 61326: 2012 Class B
Immunity	IEC 61000-4-2 8 KV atmosphere discharge, 4 KV contact discharge IEC 61000-4-3 : 3 V/m
Safety	IEC 61010-1-2010
IP for water & dust	IP 50 for housing IP 20 for terminal
Pollution degree	2
Installation category	600V CAT IV / 1000V CAT III
High Voltage Test	7.4 kV AC, 50Hz for 1 minute between housing and input



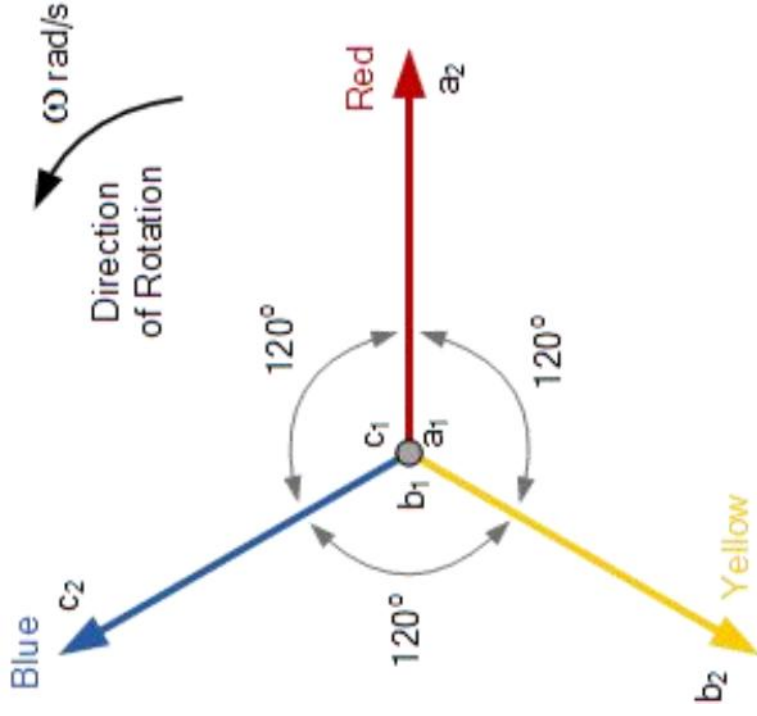
Benefits to Customers



Three Phase Power measurement

Ability to measure **3 Phase power** in **3 and 4 wire** as well as **balanced & unbalanced** conditions

Benefits to Customers





EASE OF USE

Auto-Calculation for Power measurement

User need not perform **manual calculations** for arriving at **3 Phase measurements**

Benefits to Customers

IR
RISHABH





Advanced Data Hold

*Holds readings of **all background parameters** helping user to **record multiple parameters in one go***

Benefits to
Customers

IR
RISHABH





Inrush Current

Meter provides dedicated function to measure **inrush current** for **100 msec**

Benefits to
Customers





Total Harmonic Distortion

Meter displays the **Total Harmonic Distortion** upto **49th harmonic**

Benefits to
Customers

IR
RISHABH





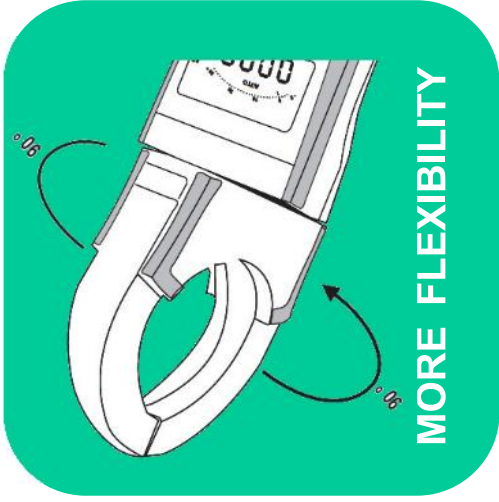
Confirms to
IEC 61010-1-2010
CATEGORY IV

Benefits to
Customers



Instrument **complies** to
high **International safety**
standards making it
suitable for wide number
of applications

IR
RISHABH



Patented Rotating Jaw Design

Facilitates measurements at
**Physically awkward and
Difficult to access areas**

Benefits to
Customers

IR
RISHABH

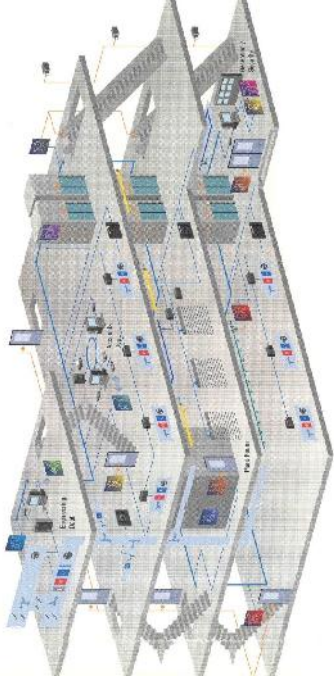




Applications



UPS & VFD Applications



Building Management System



Motor Testing & Maintenance

Typical Applications



**Machinery
Testing**



**Panel
Maintenance**



Education

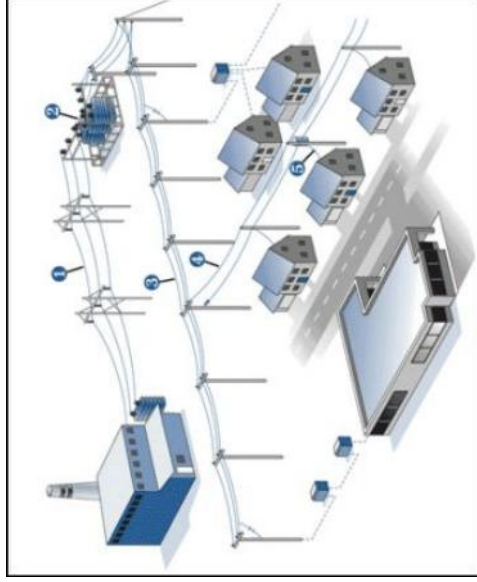


Application
Areas

IR
RISHABH



Energy Audit & Compliance agencies



Distribution



Transmission

Application
Areas



Thank You!!

For further details, visit us at www.rishabh.co.in

Head Office

Rishabh Instruments Pvt. Ltd.
F-31, MIDC, Satpur
Nashik - 422007
Maharashtra India

Trishala Unit - R&D and Marketing

Rishabh Instruments Pvt. Ltd.
C-6, NICE area, Satpur
Nashik - 422005
Maharashtra India

marketing@rishabh.co.in



Tel : 91 253 2202 028/202

Fax : 91 253 2351064