

SYSKA LED Lights Pvt. Ltd.  
Corp. Office: 7 Akshay Complex, Off. Dhole Patil Rd., Pune - 411 001  
T: +91 20 4013 1000 F: +91 20 2616 4837 E: info@sskgroup.in www.sskgroup.in

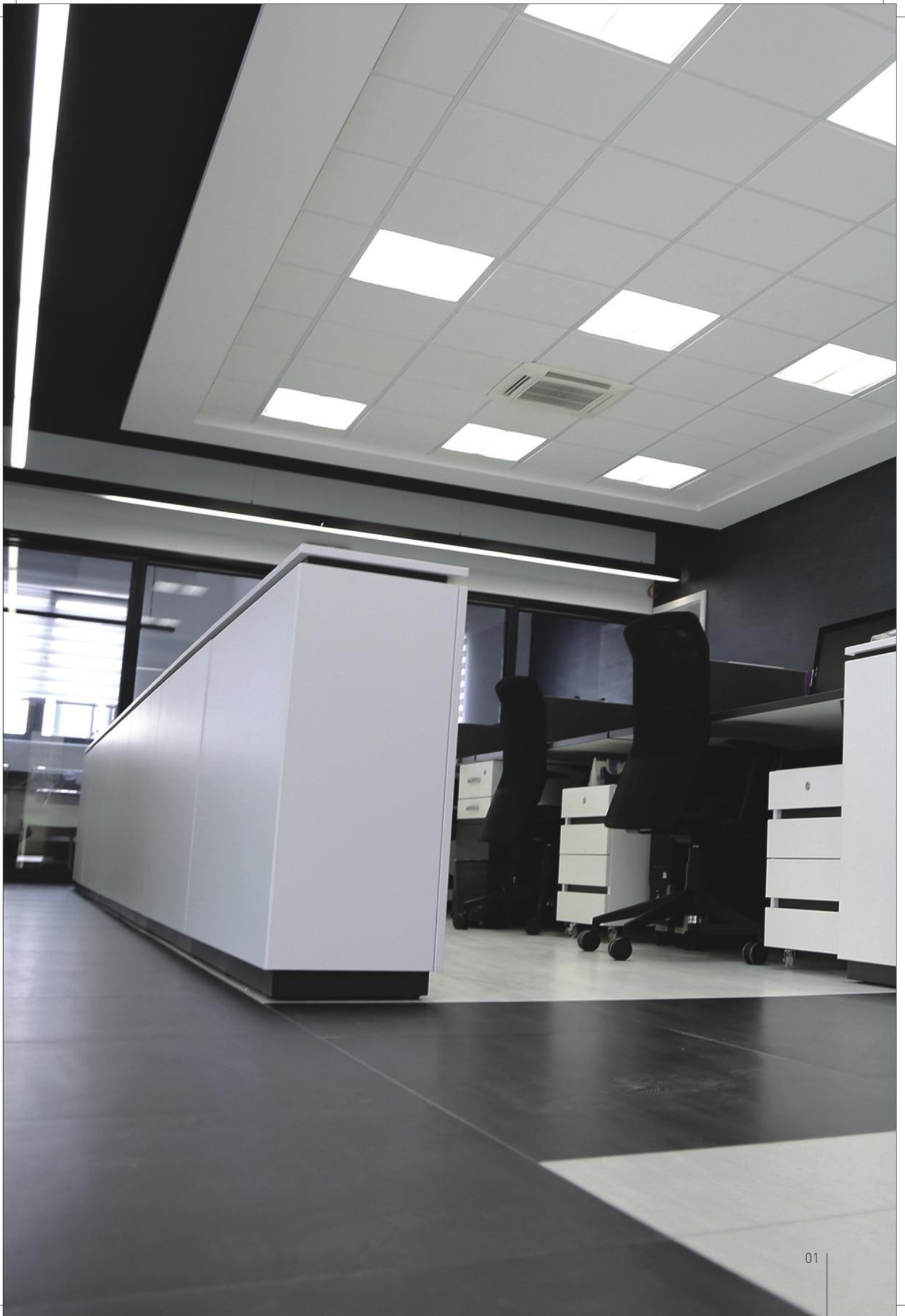
LIGHT YEARS AHEAD



**LIGHTING UP PATHWAYS  
TO THE FUTURE**



SYSKA LED Lights are a smart innovation in the future of lighting. They provide simple and lasting lighting solutions to the user. Advanced technology, energy efficiency and durability put SYSKA LED light years ahead, giving it a clear edge in today's market. Every LED light made by SYSKA LED is crafted to meet global standards. SYSKA LED Lights not only have the right technology, they also perform with ease. They are developed specially to optimize their output, outshining many other lights in the market. SYSKA LED Lights are superior quality products, priced fairly, and offer a 2-year warranty. SYSKA LED Lights offer a wide range of international quality LED lighting solutions, for varied applications providing effective and energy-efficient lighting in any environment. Their usage ranges from residential and retail, to commercial and industrial applications. SYSKA LED Lights are fully integrated into the systematic structure of the overall product range. This allows lighting designers the freedom to use LED lighting tools and seamlessly combine them with conventional products. Almost all products are UL certified bearing LM 79 test report. As the future unfolds, SYSKA LED will play a pivotal role in shifting lighting-usage from power-hungry conventional and CFL lighting to LEDs-a process, we hope will take the country and our world light years ahead.





# BETTER BRIGHTER INTERIORS

ALUMINA SERIES SPOT  
SYSKA LED Indoor Lights are a complete lighting solution for both residential and commercial spaces. They are designed to light up areas that are beyond the reach of the regular lighting fixtures. With unlimited options and unbelievable features, the extensive product range meets your every need of indoor lighting.



# LED GLASS BULBS

With a look that is very similar to traditional filament bulbs, SYSKA LED Glass Bulbs are an instant replacement for them, as they fit into the same sockets and need no further reconfiguring-while giving you regular brightness at a fraction of the wattage consumed.

Details	SSK-QA0301	SSK-QA0602	SSK-QA0701	SSK-QA0907	SSK-QA1201	SSK-QA1601
Input Power	3W	5W	7W	10W	12W	16W
Input Voltage	AC90-300V, 50Hz / DC12V			AC90-300V, 50Hz		
Size (mm)	ø45x80(H)	ø58x108(H)	ø60x112(H)	ø60x108(H)	ø80x140(H)	ø90x190(H)
Color Temperature	3000-4000-6500 K					
CRI	More than 75					
Beam Angle	>220 deg					
Lumens	250	410	600	820	1200	1600
Operating Temperature	[-20 deg to 60 deg centigrade]					
Base	B 22/E 27					

**applications:** • offices • malls • showrooms • residential

**features:** • elegant & traditional look • lower consumption and energy saving  
• replacement for CFL lamp • omni directional illumination



## LED ROCKET LAMP

LED Rocket Lamps are energy efficient, environment friendly and retrofit solution for high power CFL lamps. Compatible with all types of fixing bases, offers versatile features for household and industrial applications. The lamp size is optimized to accommodate into the regular conventional light housing and has an efficient thermal dissipation that offers an elegant look to the light.

Details	SSK-RB-1801	SSK-RB-2501	SSK-RB-3501	SSK-RB-4501
Input Power	18W	25W	35W	45W
Holder Base	B22/E27		B22/E27/E40	
Size (mm)	ø80x180	ø80x196	ø100x209	ø100x230
Input Voltage	AC90~300V, 50Hz			
Colour Temperature	3000 K-6500 K			
CRI	More than 75			
Beam Angle	>220 deg			
Lumens	>1800	>2500	>3500	>4500
Ingress Protection	IP44			
Operating Temperature	[-20 deg to 60 deg centigrade]			

**applications:** • outdoor lighting • showrooms

**features:** • lower consumption and energy saving • replacement for high voltage CFL & HD lamps  
• eco-friendly • reduces co<sub>2</sub> • good colour rendering • long life span (50,000 hrs.) • no uv radiation



Details	SKC-0.5W-W	SKC-0.5W-Y	SKC-0.5W-R	SKC-0.5W-B	SKC-0.5W-G	SKC-0.5W-O	SKC-0.5W-P	SKC-0.5W-LB	SKC-0.5W-FG	SKC-0.5W-C
Colours	White	Yellow	Red	Blue	Green	Orange	Pink	Light Blue	Flure Green	Clear
Input Power	0.5W									
Input Voltage	AC90~300V, 50Hz									
Size (D x H) mm	ø30x178									
Beam Angle	270 deg									
Operating Temperature	(-20 deg to 60 deg centigrade)									
Base	B22									

**applications:** • homes • offices • restaurants • testing labs • decorations

**features:** • wide operating voltage • very low heating • eco-friendly

## LED 0.5W BULB

A true replacement for the wrongly termed 'zero-watt' bulb, which are usually in 10 to 15W range. Consuming only a fraction of one watt, they provide significant power saving, especially when used in multiples, for decorative purposes, and in places where they remain lit for a long period of time.





## LED PA BULB

This economical option for CFL/glass lamp uses a new technology of plastic-aluminium thermal management which offers a longer life with maximum efficiency. Additionally the design of the shell cover is such that it provides omni-directional lighting effect for your interior spaces.

Details	SSK-PA-3W	SSK-PA-5W	SSK-PA-7W	SSK-PA-9W
Input Power	3W	5W	7W	9W
Input Voltage	AC90~300V, 50Hz			
Colour Temperature	3000 K-6500 K			
CRI	More than 80			
Beam Angle	>220deg			
Lumens	270	450	630	810
Operating Temperature	[-20 deg to 60 deg centigrade]			
Base	B 22 / E 27			
Size (mm)	50x105	55x115	60x125	65x135

**applications:** • offices • malls • showrooms • residential

**features:** • elegant & traditional look • lower consumption and energy saving  
• replacement for CFL lamps • omni directional illumination

Details	SSK-PAP-3W	SSK-PAP-5W	SSK-PAP-7W	SSK-PAP-10W
Input Power	3W	5W	7W	10W
Input Voltage	AC90~300V, 50Hz			
Colour Temperature	3000 K-6500 K			
CRI	More than 80			
Beam Angle	240 deg			
Lumens	240/270/300	425/450/500	600/630/700	800/850/900
Operating Temperature	(-20 deg to 60 deg centigrade)			
Base	B 22/E 27			
Size (mm)	ø50x90(H)	ø60x110(H)	ø60x110(H)	ø60x110(H)

**applications:** • offices • malls • showrooms • residential

**features:** • sleek & elegant design

## LED PAP BULBS

LED PAP Bulb has a slender and aesthetic design with glossy surface finish that provides light distribution in 360° direction. This light with a unique artistic feature is perfect to brighten up a desired personal space.





## LED GLOBE LAMPS

SYSKA LED Globe Lamps are designed to meet your outdoor lighting needs. From lighting up your gates, fences, approach roads, etc., these lights brighten up your walkway with impeccable light rendering and make a rather dull path brightly visible.

Details	SKC 8B 8W
Input Power	8W
Input Voltage	AC90~300V, 50Hz
Colour Temperature	3000 K - 6500 K
CRI	More than 85
Lumens	520 / 560
Operating Temperature	(-20 deg to 60 deg centigrade)
Base	E27

**applications:** • showrooms • architecture lighting  
• gate lights • fence lights

**features:** • lower consumption and energy saving  
• eco-friendly • reduces co<sub>2</sub> • good colour rendering  
• long life span (50,000 hrs.) • no uv radiation

Details	SSK-LNGY-1011Y	SSK-LNGY-1011Y-S	SSK-LNGY-101BY-D	SSK-LNGY 101BY-S-D	SSK-LNZX 103A
Lens	CLEAR	FROSTED	CLEAR	FROSTED	CLEAR
Input Power	3.5W		4W		3W
Input Voltage	AC90~300V, 50Hz				
Colour Temperature	2700 K				
Type	Non-dimmable		Dimmable		Non-dimmable
CRI	More than 80				
Lumens	280		320		240
Housing	Zinc Alloy				
Operating Temperature	(-20 deg to 60 deg centigrade)				
Base	E 14				

**applications:** • restaurants • hotels • cafés • museums • commercial and home decorative lighting places suitable for chandeliers

**features:** • elegant look • medieval ambience • lifetime more than 25,000 hrs.

## LED CANDLE LIGHTS

Uniquely shaped to mimic the flame of a bright candle, these elegant lights take pride of place in chandelier arrangements or as an array of decorative lights increasing the aesthetic appeal of restaurants, cafeterias, museums as well as in commercial or home-decorative use.





## LED MR16

SYSKA LED MR16 are more powerful as compared to regular halogen lights. Their unmatched colour rendering capacity adds glory to monuments, architectural sites, showrooms, etc. These are best used as façade lighting and spot lighting.

Details	MR16 3W	MR16 5W	MR16 7W	MR16 9W
Input Power	3W	5W	7W	9W
Holder Base	GU 5.3/10	GU 5.3/10	GU 5.3/10	GU 10
Power Supply	DC/AC	DC/AC	DC/AC	AC
Input Voltage	AC90-300V, 50Hz/12V DC			
Colour Temperature	2700 K-6500 K			
CRI	More than 85			
Beam Angle	30-90 deg			
Lumens	170	270	420	540
Finish	Powder Coated			
Housing	Aluminium Die Casting			
Operating Temperature	[-20 deg to 60 deg centigrade]			

**applications:** • showrooms • architecture lighting • spot lighting

**features:** • lower consumption and energy saving • replacement for halogen PAR lamps  
• eco-friendly • reduces CO<sub>2</sub> • good colour rendering • long life span (50,000 hrs.) • no uv radiation



## LED LAMPS (GU 10 BASE)

SYSKA LED Lamps (GU 10 Base) made with special Cameta lenses are replacements for halogen or compact fluorescent lamps. These lamps are designed to illuminate your office, malls and showroom spaces with their pleasing radiance.

Details	SSK-MR-097	SSK-MR-081
Input Power	5W	7W
Input Voltage	AC90~300V, 50Hz	
Size (mm)	ø50x65(H)	ø50x89(H)
Colour Temperature	3000 K	
CRI	More than 80	
Beam Angle	38 deg	
Lumens	350	450
Operating Temperature	(-20 deg to 60 deg centigrade)	
Base	GU 10	

**applications:** • offices • malls • showrooms • residential

**features:** • elegant look • medieval ambience • high color rendering  
• 'cameta' lens



Details	SSK-MR-091	SSK-MR-049
Input Power	5W	7W
Input Voltage	AC90~300V, 50Hz / DC12V External driver	
Size (mm)	ø50x64(H)	ø50x79(H)
Colour Temperature	3000 K	
CRI	More than 80	
Beam Angle	38 deg	
Lumens	350	450
Operating Temperature	(-20 deg to 60 deg centigrade)	
Driver	Dimmable / Non-Dimmable	
Base	GU 5.3	

**applications:** • offices • malls • showrooms • residential

**features:** • elegant look • medieval ambience • high color rendering  
• 'cameta' lens

## LED LAMPS (GU 5.3 BASE)

SYSKA LED Lamps (GU 5.3 Base) made with special Cameta lenses are replacements for halogen or compact fluorescent lamps. These lamps are designed to illuminate your office, malls and showroom spaces with their pleasing radiance.





## LED LAMPS

SYSKA LED Lamps are aesthetically designed cylindrical shaped lamps made with special Cameta lenses and are replacements for halogen or compact fluorescent lamps. These lamps are designed to illuminate your office, malls and showroom spaces with their pleasing radiance.

Details	SSK-MR-094	SSK-MR-094D
Input Power	8W	
Input Voltage	AC90~300V, 50Hz/DC12V External Driver	
Size (mm)	ø50x58(H)	
Colour Temperature	3000 K	
CRI	More than 80	
Beam Angle	38 deg	
Lumens	630	
Operating Temperature	(-20 deg to 60 deg centigrade)	
Driver	Non-Dimmable/Dimmable	

**applications:** • offices • malls • showrooms • residential

**features:** • elegant look • medieval ambience • high color rendering  
• 'cameta' lens

Details	SSK-PA-043-C64
Input Power	8W
Input Voltage	AC90~300V, 50Hz
Size (mm)	ø63x93(H)
Colour Temperature	4000 K-5000 K
CRI	More than 80
Beam Angle	60 deg
Lumens	650
Operating Temperature	(-20 deg to 60 deg centigrade)
Base	E27

**applications:** • facade lighting • spot lighting • malls  
• showrooms • residential

**features:** • replacement for halogen PAR lamps  
• good colour rendering

## LED PAR LAMPS (PAR 20)

SYSKA LED PAR Lamps add glory to monuments, architectural sites, showrooms, etc. Used also as façade lighting and spot lights, these high power LEDs have unmatched colour rendering capacity and are perfect replacements for the regular halogen PAR lamps.





## LED PAR LAMPS (PAR30)

SYSKA LED PAR Lamps add glory to monuments, architectural sites, showrooms, etc. Used also as façade lighting and spot lights, these high power LEDs have unmatched colour rendering capacity and are perfect replacements for the regular halogen PAR lamps.

Details	SSK-PA-041-C63	SSK-PA-041-C68
Input Power	15W (IP65)	17W
Input Voltage	AC90-300V, 50Hz	
Size (mm)	ø112x128(H)	
Colour Temperature	4000 K-5000 K	
CRI	More than 80	
Beam Angle	60 deg	
Lumens	1100	1360
Operating Temperature	(-20 deg to 60 deg centigrade)	
Ingress protection	IP65	IP20
Base	E27	

**applications:** • façade lighting • spot lighting • malls • showrooms • residential

**features:** • replacement for halogen PAR lamps • good colour rendering

Details	SSK-PA-042-C64
Input Power	13W
Input Voltage	AC90~300V, 50Hz
Size (mm)	ø95x119(H)
Colour Temperature	4000 K-5000 K
CRI	More than 80
Beam Angle	60 deg
Lumens	1100
Operating Temperature	(-20 deg to 60 deg centigrade)
Base	E27

**applications:** • facade lighting • spot lighting • malls  
• showrooms • residential

**features:** • replacement for halogen PAR lamps  
• good colour rendering

## LED PAR LAMPS (PAR30)

SYSKA LED PAR Lamps add glory to monuments, architectural sites, showrooms, etc. Used also as façade lighting and spotlights, these high power LEDs have unmatched colour rendering capacity and are perfect replacements for the regular halogen PAR lamps.





## LED T5 TUBE LIGHTS

SYSKA LED T5 Tube Lights are more efficient at power-saving as compared to the regular tube lights. These simple and easy to install fixtures are an undoubted champion for your regular lighting purposes.

Details	SSK-RA0401-N	SSK-RA0801-N	SSK-RA1601-N
Input Power	4W	8W	16W
Input Voltage	AC90~300V, 50Hz		
Size (mm)	ø26.5x300 (L)	ø26.5x600 (L)	ø26.5 x1200 (L)
Colour Temperature	3000 K-4000 K-6500K		
CRI	More than 80		
Beam Angle	120 deg		
Lumens	360	750	1600
Operating Temperature	[-20 deg to 60 deg centigrade]		

**applications:** • offices • malls • showrooms • residential

**features:** • elegant look • lower consumption & energy saving

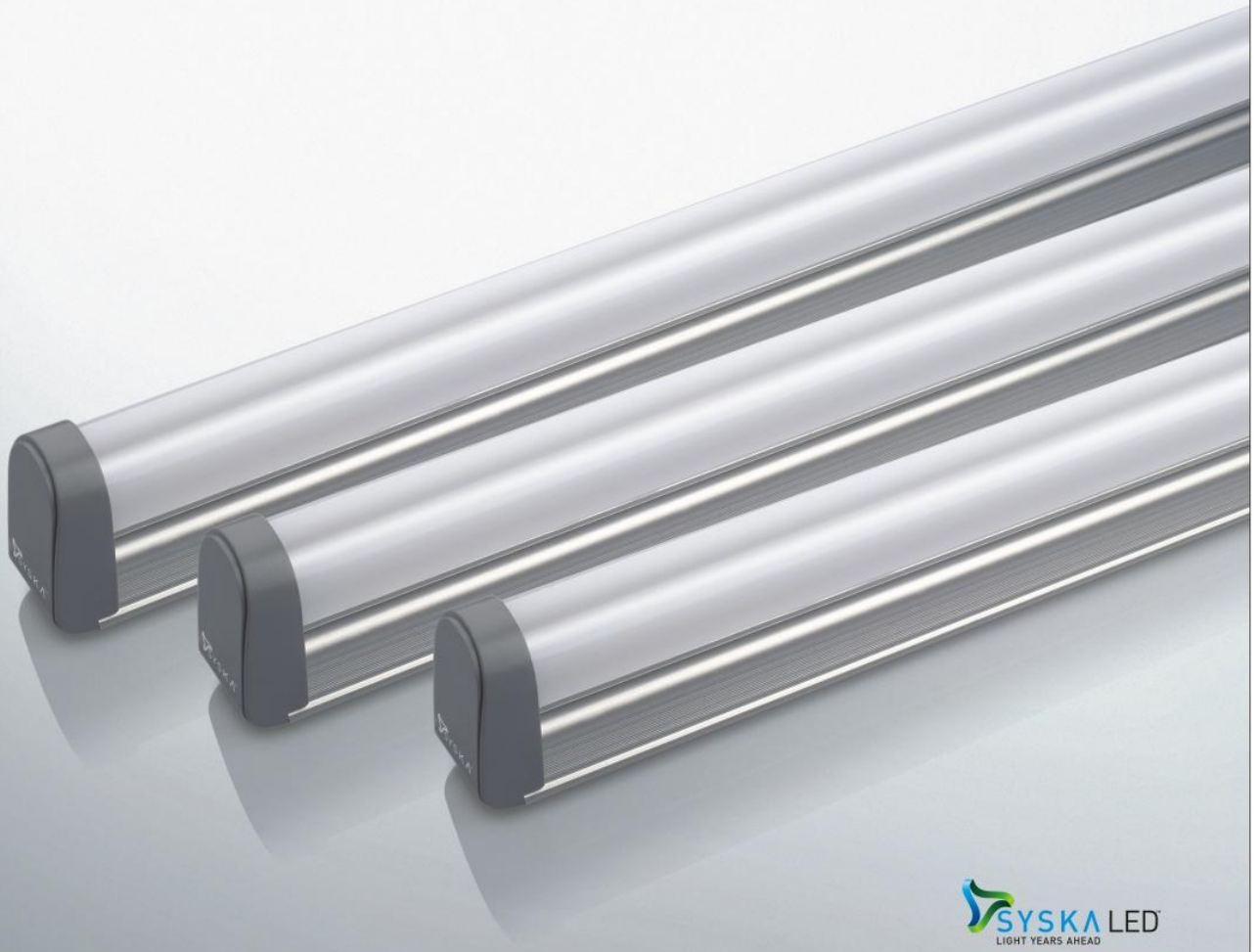
Details	SSK-T5-6W	SSK-T5-12W	SSK-T5-22W
Size (mm)	ø26.5x300(L)	ø26.5x600(L)	ø26.5x1200(L)
Input Power	6W	12W	22W
Input Voltage	AC90~300V, 50Hz		
Colour Temperature	3000 K-4000 K-6500K		
CRI	More than 80		
Beam Angle	90 deg		
Lumens	480/510/540	960/1020/1080	1700/1800/1900
Operating Temperature	(-20 deg to 60 deg centigrade)		

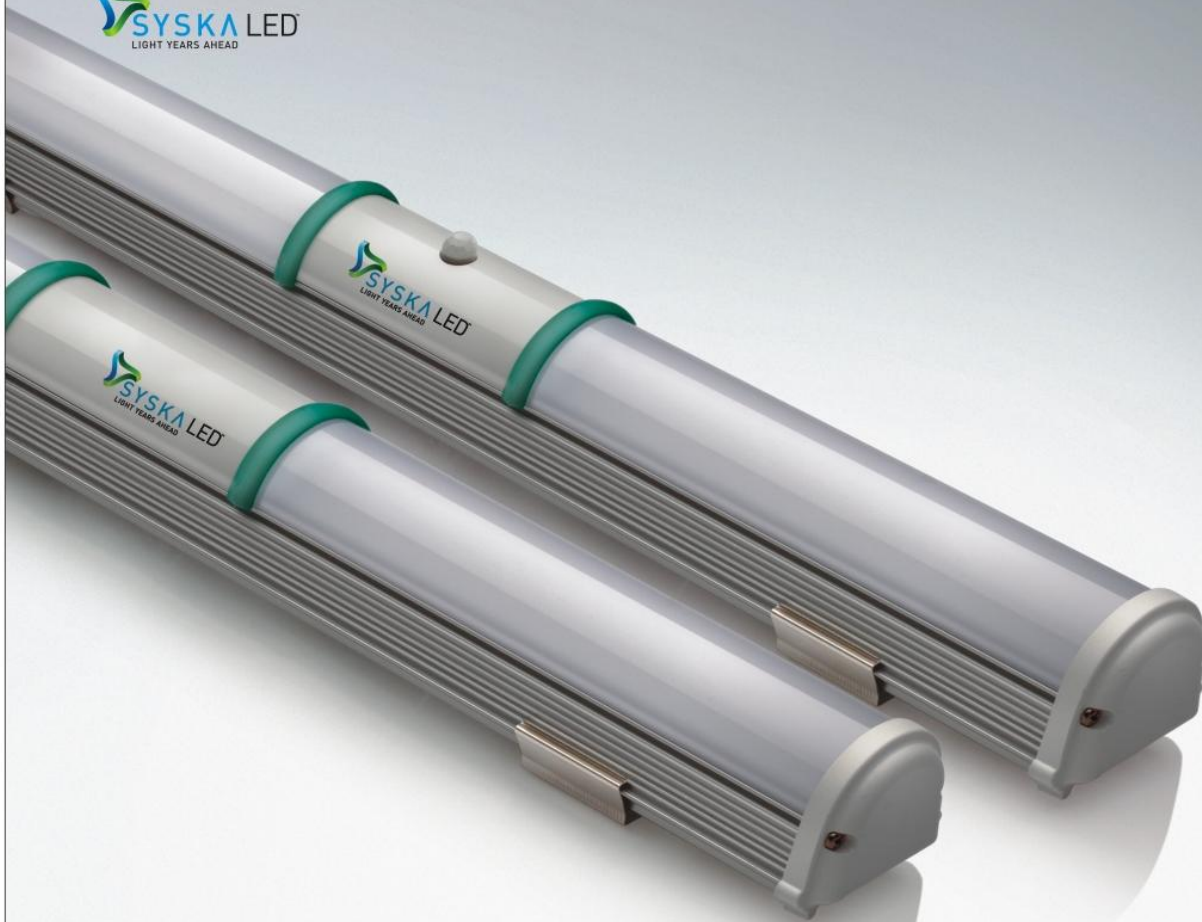
**applications:** • offices and conference rooms • homes and work tables  
• parking areas, etc.

**features:** • lower consumption and energy saving • eco-friendly  
• replacing conventional fluorescent lamp (T5 & T8) • reduces CO<sub>2</sub>  
• good colour rendering • long life span (50,000 hrs.)  
• supported by better extruded aluminium body • no uv radiation

## LED T5 TUBE LIGHTS (ALUMINIUM)

SYSKA LED Slim Tube Lights are slimmer and shorter as compared to the regular tube lights. These simple and easy to install fixtures are an undoubted champion for your regular lighting purposes.





## INDOOR LIGHTS WITH SENSOR

SYSKA LED Ceiling Lights with sensors are best suited for areas where controlled yet uniform lighting is required. They are ideal along corridors, work tables as well as common areas like parking lots and washrooms.

Details	SSK-T12-IFPL12x2	SSK-T12-IFPLS 12X2	SSK-T12-IFPL-18X2	SSK-T12-IFPLS-18X2	SSK-T12-IFPL-24X2	SSK-T12-IFPLS-24X2
Input Power	24W	24W	36W	36W	48W	48W
Input Voltage	AC90~300V, 50Hz					
Size (L x W x H) mm	433x53x48					
Power Factor	0.9					
Colour Temperature	6500 K					
CRI	More than 80					
Beam Angle	170 deg					
Lumens	2280	2280	3420	3420	4560	4560
Operating Temperature	[-20 to 60 deg centigrade]					
LED Driver	Constant Voltage and Current					

**applications:** • parking areas • residential and commercial corridors • washrooms

**features:** • controlled lighting • eco-friendly • long life span (50,000 hrs.) • uniform light



Details	SSK-CNRB-1601	SSK-T8-18W	SSK-TL-22W-I
Input Power	16W	18W	22W
Input Voltage	AC90~300V, 50Hz		
Colour Temperature	6500 K		
CRI	More than 80		
Beam Angle	90 deg		
Lumens	1500	1800	2250
Operating Temperature	(-20 deg to 60 deg centigrade)		
Size (mm)	ø26x1200		

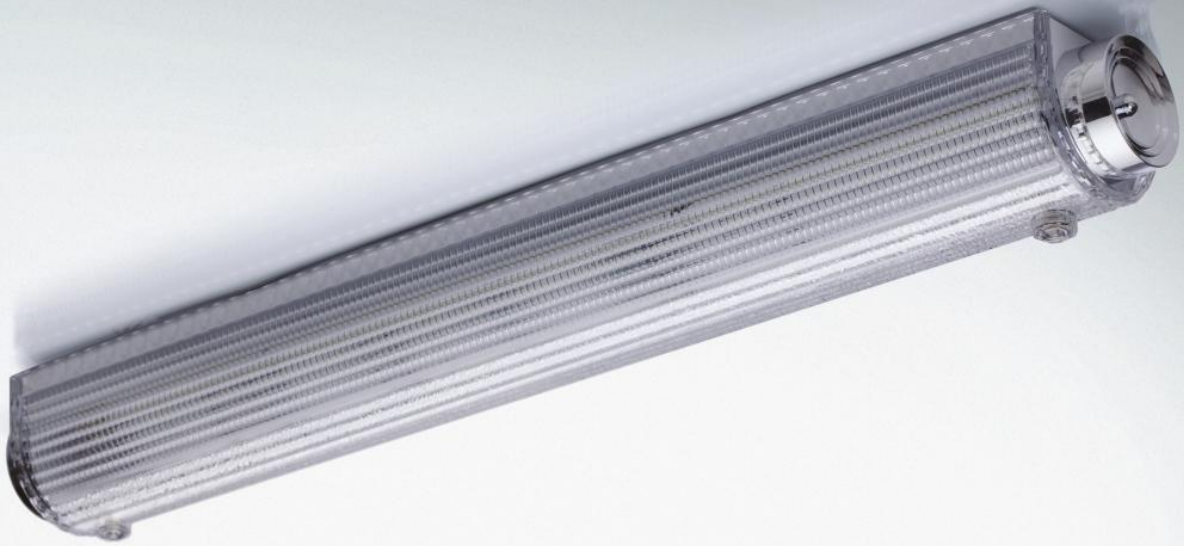
**applications:** • offices and conference rooms • homes and work tables  
• parking areas, etc.

**features:** • lower consumption and energy saving • eco-friendly  
• replacing conventional fluorescent lamp (T5 & T8) • reduces CO<sub>2</sub>  
• good colour rendering • long life span (50,000 hrs.)  
• supported by better extruded aluminium body • no uv radiation

## LED T8 TUBE LIGHT

SYSKA LED Tube Lights are best described as hassle-free lights. Flicker-free, energy-efficient, maintenance-free with no added requirements. Available in various sizes, these lights are a perfect retrofit for your traditional fluorescent tube lights.





## LED HOUSE LIGHTS

Best suited for spaces that require 'tube-lit' lighting, they are ideal along corridors, work tables as well as common areas like parking lots and stairwells. They can also be used within premises for brightening up the surroundings with maximum light diffusion.

Details	SSK-HX1-03	SSK-HX1-04	SSK-HX2-01	SSK-HX2-02	SSK-HX2-03	SSK-HX2-04	SSK-HX3-03	SSK-HX3-04
Input Power	24W	18W	20W	10W	20W	10W	24W	18W
Input Voltage	AC90-300V, 50Hz							
Size (W x D x H) mm	635x82x75	500x82x75	485x86x73	310x86x73	485x86x73	310x86x73	630x105x90	520x105x90
Power Factor	0.95							
Colour Temperature	6500 K							
CRI	More than 80							
Beam Angle	170 deg							
Lumens	2160	1620	1800	900	1800	900	2160	1620
Operating Temperature	[-20 deg to 60 deg centigrade]							
LED Driver	Constant Voltage and Current							

**applications:** • homes • offices • parking areas • work tables etc.

**features:** • lower power consumption and energy saving • eco-friendly • good colour rendering

Details	SSK-T8-WP-20W
Input Power	20W
Input Voltage	AC90~300V, 50Hz
Size (L x B x H) mm	ø33x1263
Power Factor	0.95
Colour Temperature	2700 K
CRI	More than 75
Beam Angle	150 deg
Lumens	1950
Operating Temperature	(-20 deg to 60 deg centigrade)
IP	IP65

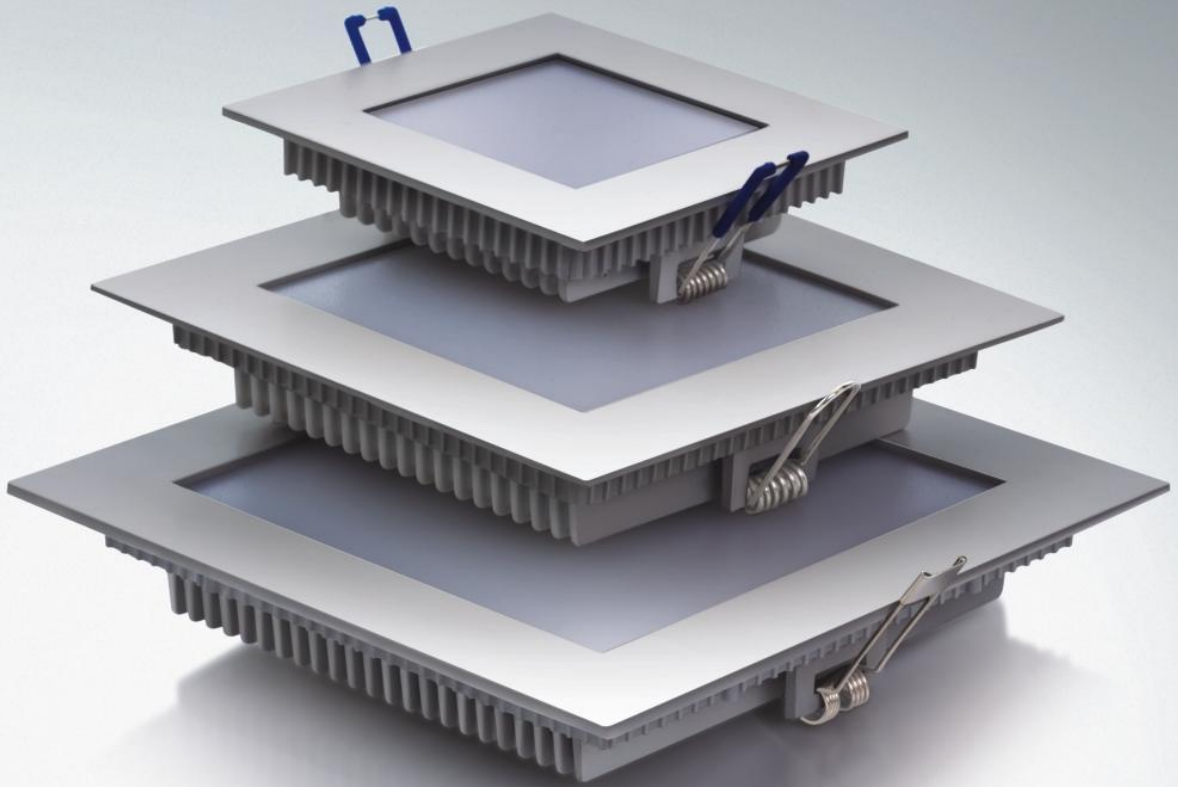
**applications:** • clean rooms • warehouses • dairies  
• hospitals • chemical industries

**features:** • eco-friendly • moisture proof • less heating  
• linear connectivity multiple

## LED WATERPROOF TUBE LIGHT

A tube light with a robust and sturdy design that offers a longer life and withstands extreme weather conditions. Its rain-proof feature makes it best suited for the outdoor application, where illumination is needed.





## LED SQUARE DOWN LIGHTS

Elegantly designed to fit seamlessly within ceilings, these square lights offer higher aesthetic value and can be configured in patterns and designs that go well with the overall decor around. Low power consumption combined with longer life-spans, mean negligible maintenance.

Details	SSK-DLS-4" 8W	SSK-DLS-5" 12W	SSK-DLS-6" 12W	SSK-DLS-6" 15W	SSK-DLS 6" 20W
Input Power	8W	12W	12W	15W	20W
Input Voltage	AC90~300V, 50Hz				
Power Factor	0.95				
Colour Temperature	4000 K-6500 K				
CRI	More than 80				
Beam Angle	170 deg				
Lumens	680	1020	1020	1275	1700
Operating Temperature	[-20 deg to 60 deg centigrade]				
LED Driver	Constant Voltage and Current				
Size (L x W x H) mm	108x108x30	151x151x30	178x178x30		

**applications:** • offices and conferences rooms • corridors and galleries • homes and work tables • showrooms

**features:** • upto 80% energy saving • eco-friendly • long life span (50,000 hrs.)

Details	SDL 3" 4W	SDL 4" 8W	SDL 6" 10W	SDL 8" 12W	SDL 10" 15W	SDL 12" 20W
Input Power	4W	8W	10W	12W	15W	20W
Input Voltage	AC90~300V, 50Hz					
Colour Temperature	3000 K-4000 K-6500 K					
CRI	More than 80					
Lumens	240/290/340	400/450/510	580/630/680	750/800/850	930/980/1030	1600/1650/1700
Housing	Die cast aluminium					
Operating Temperature	[-20 deg to 60 deg centigrade]					
Size (mm)	ø96x6	ø110x6	ø162x6	ø217x6	ø268x6	ø310x6

**applications:** • offices and conference rooms • corridors and galleries  
• homes and work tables • showrooms and shopping malls

**features:** • more than 60% energy saving • eco-friendly  
• long life span (50,000 hrs.) • slim design • easy mounting arrangement

## LED SLIM DOWN LIGHTS

Slim Disc Down Lights by SYSKA LED Lights are elegantly designed ceiling lights. Their unique magnetic plate mountings are simple yet classy looking arrangements. You can enjoy a full moon effect with their uniform and diffused illumination.





## LED DEEP DOWN LIGHTS

SYSKA LED Deep Down Lights are used mainly as ceiling fixtures. These down lights are used in relatively larger indoor places like shopping malls, showrooms, galleries, etc. Their powder coated finish adds a sense of style and elegance to your interiors.

Details	DDL 4" 8W	DDL 6" 15W	DDL 7" 20W	DDL 8" 30W
Input Power	8W	15W	20W	30W
Input Voltage	AC90-300V, 50Hz			
Power Factor	0.9			
Colour Temperature	4000 K-6500 K			
CRI	More than 80			
Beam Angle	170 deg			
Lumens	550	1000	1250	1800
Operating Temperature	(-20 deg to 60 deg centigrade)			
Size (mm)	ø129x66	ø190x75	ø200x80	ø230x90
Cut Out ø	120	175	180	210

**applications:** • offices and conference rooms • homes and work tables  
• corridors and galleries • showrooms and shopping malls

**features:** • more than 60% energy saving • eco-friendly and energy saving  
• long life span (50,000 hrs.) • good option to replace conventional down lights

Details	SDLC 12W	SDLC 15W
Input Power	12W	15W
Input Voltage	90-300V AC-50 Hz	
Power Factor	0.95	
Colour Temperature	4000 K-6500 K	
CRI	More than 85	
Beam Angle	170 deg	
Lumens	1200	1500
Finish	Powder coated	
Housing	Die cast aluminium	
Operating Temperature	[-20 deg to 60 deg centigrade]	
Size (cut out)	6"	

**applications:** • offices and conference rooms • corridors and galleries  
• homes and work tables • showrooms and shopping malls

**features:** • up to 80% energy saving • eco-friendly  
• long life span (50,000 hrs.)

## LED DISK DOWN LIGHTS

Designed especially for low space recess mounting, these Disc Down Lights by SYSKA LED Lights, offer an instant solution to directional light. These are retrofits, environment friendly and energy-efficient. With colours made to match your decor, these disc lights are the future of down lighting.





## LED PANEL LIGHTS (ROUND)

These edge-lit round LED panels are designed to light up indoor spaces such as hallways, corridors, conference rooms, malls, showrooms, etc. Apart from being energy-efficient and environment friendly, SYSKA LED Light Panels also impart a sense of fine luxury through their classic design and aesthetics.

Details	SSK-PA2343E	SSK-PA2344E	SSK-PA2346F	SSK-PA2346E	SSK-PA2348E	SSK-PA3030E
Input Power	5W	8W	12W	15W	20W	24W
Input Voltage	AC90~300V, 50Hz					
Size (mm)	ø85x12	ø121x12	ø172x12	ø172x12	ø223x12	ø300x13
Cut out (ø)	75	108	160	160	210	
Colour Temperature	3000 K-4000 K-6500 K					
Beam Angle	110 deg					
Lumens	>250	>400	>700	>850	>1250	>2160
CRI	More than 80					
Operating Temperature	[-20 deg to 60 deg centigrade]					

**applications:** • offices • malls • showrooms • residential

**features:** • edge-lit panel • slim • high light efficiency • uniform light



Details	SSK-PA2703E	SSK-PA2704E	SSK-PA2706F	SSK-PA2706E	SSK-PA2708E	SSK-PA3030F
Input Power	5W	8W	12W	15W	20W	24W
Input Voltage	AC90-300V, 50Hz					
Size (mm)	85x85x12	118x118x12	172x172x12	172x172x12	226x226x12	300x300x13
Cut out	75x75	108x108	160x160	160x160	210x210	
Colour Temperature	3000 K-4000 K-6500 K					
CRI	More than 80					
Operating Temperature	(-20 deg to 60 deg centigrade)					
Beam Angle	110 deg					
Lumens	>250	>400	>700	>850	>1250	>2160

**applications:** • offices • malls • showrooms • residential

**features:** • edge-lit panel • slim • high light efficiency • uniform light

## LED PANEL LIGHTS (SQUARE)

These edge-lit square LED panels are designed to light up indoor spaces such as hallways, corridors, conference rooms, malls, showrooms, etc. Apart from being energy-efficient and environment friendly, SYSKA LED Light Panels also impart a sense of fine luxury through their classic design and aesthetics.





## LED DOWN LIGHTS (MR16)

SYSKA LED Down Lights are easy-to-install ceiling light fixtures. Made using special 'Cameta' lenses, these lights are a perfect fit for high ceiling, low ceiling, POP, surface mounting, etc.

Details	SSK-DL-057-R	SSK-DL-057-S	SSK-DL-096-R
Input Power	8W	8W	13W
Input Voltage	AC90~300V, 50Hz		
Colour Temperature	3000 K-4000 K-6500 K		
CRI	More than 80		
Beam Angle	38 deg		
Size (mm)	ø90x58	90x90x58	ø110x70
Cut out (ø)	60	61x61	80
Lumens	600	600	1000
Operating Temperature	(-20 deg to 60 deg centigrade)		

**applications:** • offices • malls • showrooms • residential

**features:** • elegant look • medieval ambience • high colour rendering • 'cameta' lens

Details	SSK-ALC-4"	SSK-ALC-6"	SSK-ALC-6"	SSK-ALC-7"
Input Power	8W	12W	15W	20W
Input Voltage	AC90~300V, 50Hz			
Size (mm)	ø89x24	ø118x24	ø172x24	ø172x24
Colour Temperature	3000 K-4000 K-6500 K			
Lumens	>580	>870	>1090	>1460
Power Factor	0.90			
CRI	More than 80			
Operating Temperature	[-20 deg to 60 deg centigrade]			

**applications:** • offices • malls • showrooms • residential

**features:** • slim • high light efficiency • uniform light

## LED ALC DOWN LIGHT

LED ALC Down light has an elegant design offering higher light output, mainly designed for the economical segment, it's simple & easy installation features meet the needs of users.





## LED DOWN LIGHTS (GIMBAL)

These down lights come with a specially designed gyro-like mounting that allows you to accurately point the light in a specific angle, and direct the beam angle in such a way that you get the maximum effect. It can also be used in confined spaces where multiple direction options are needed.

Details	SSK-DL-098
Input Power	15W
Input Voltage	AC90~300V, 50Hz
Power Factor	>0.9
Colour Temperature	3000 K-4000 K-6500 K
CRI	More than 80
Beam Angle	38 deg
Lumens	1200
Housing	Die cast Aluminum
Operating Temperature	(-20 deg to 60 deg centigrade)

**applications:** • offices • malls • showrooms • residential

**features:** • elegant look • accurate beam angle • high colour rendering • 'cameta' lens

Details	SSK-LNTH-201A	SSK-LNTH-201B	SSK-LNTH-201C	SSK-LNTH-201E
Input Power	3W	5W	7W	9W
Input Voltage	AC90~300V, 50Hz			
Size (mm)	ø93x49(H)	ø140x56.5(H)	ø140x56.5(H)	ø145x58.5(H)
Cut out (ø)	80	125	125	135
Colour Temperature	3000 K-4000 K-6500 K			
CRI	More than 80			
Beam Angle	15 deg-45 deg			
Lumens	255	425	595	800
Operating Temperature	(-20 deg to 60 deg centigrade)			

applications: • offices • malls • showrooms • residential

features: • elegant look • die cast aluminium body • white powder coated • clear lens

## LED DOWN LIGHTS (CLEAR LENS)

These down lights have the distinctive clear lens which allows each point source to be clearly visible, as compared to an opaque lens which distributes even light. The multiple point sources add to its elegance, making it seem like a cluster of twinkling stars.





## LED DOWN LIGHTS (COB)

A unique structure of the mirror reflector in these lights, brings alive the light formation like they were the grains of crystal, making this a unique and distinguishing pattern feature. The die-cast Al body with powder-coated inner ring add to the elegance.

Details	SSK-LNTH-201K1	SSK-LNTH-201F1	SSK-LNTH-201H1	SSK-LNTH-201I1	SSK-LNTH-201J1
Input Power	4W	7W	13W	24W	32W
Input Voltage	AC90~300V, 50Hz				
Size (mm)	ø68x47(H)	ø86x67(H)	ø86x65(H)	ø112x84.5(H)	ø131x75(H)
Cut out	ø56	ø78	ø78	ø108	ø119
Colour Temperature	3000 K				
CRI	More than 85				
Beam Angle	24 deg-36 deg				
Lumens	340	595	1105	2040	2720
Operating Temperature	[-20 deg to 60 deg centigrade]				

**applications:** • offices • malls • showrooms • residential

**features:** • elegant look • die cast aluminium body • white powder coated with inner ring • mirror reflector

Details	SSK-LNTH-201F3	SSK-LNTH-201H3	SSK-LNTH-201I3
Input Power	7W	13W	24W
Input Voltage	AC90~300V, 50Hz		
Size (mm)	ø103x67(H)	ø103x85(H)	ø128x92(H)
Cut out	ø88	ø88	ø108
Colour Temperature	3000 K-5000 K		
CRI	More than 85		
Beam Angle	24 deg-36 deg		
Lumens	595	1105	2040
Operating Temperature	[-20 deg to 60 deg centigrade]		



## LED DOWN LIGHTS (DIAMOND LENS)

Mounting these onto a ceiling would make it like a jewel-studded canopy. This effect is a result of the clear lens on this light which has facets cut into it, like on a glittering diamond-giving it a very good light distribution and that shimmering effect.

Details	SSK-DL-065
Input Power	9W
Input Voltage	AC90~300V, 50Hz
Size (mm)	ø170x50(H)
Cut out	ø150
Colour Temperature	4000 K-5000 K
CRI	More than 80
Beam Angle	100 deg
Lumens	650
Operating Temperature	(-20 deg to 60 deg centigrade)

**applications:** • offices • malls • showrooms • residential

**features:** • good light distribution • SMD base • diamond clear lens



Details	SSK-DL-038	SSK-DL-040	SSK-DL-052.C12	SSK-DL-052.C11
Input Power	14W	22W	28W	39W
Input Voltage	AC90~300V, 50Hz			
Size (mm)	ø116x71.5(H)	ø169x91(H)	ø230x132(H)	ø230x132(H)
Cut out	ø102	ø152	ø205	ø205
Colour Temperature	4000 K-5000 K			
CRI	More than 80			
Beam Angle	60 deg			
Lumens	1000	1500	2250	3200
Operating Temperature	(-20 deg to 60 deg centigrade)			

applications: • offices • malls • showrooms • residential

features: • elegant look • medieval ambience • high color rendering • best unified glare index by 'cameta' lens

## LED DOWN LIGHTS (DIMMABLE)

These down lights come with the additional control of dimming the brightness, so you can use them selectively to modify the illumination of a specific area, giving you a lighting-design of your choice, apart from a higher order of power saving.





## LED DOWN LIGHTS- Corona Series (Integrated Driver)

SYSKA LED Corona Series Down Lights come with a built-in advantage—an Integrated Driver, altogether removing the necessity of additional circuitry. This makes them easy-to-use with just one simple fixture.

Details	SSK-CL7725	SSK-CL7730	SSK-CL7735	SSK-CL7740
Input Power	3W	5W	7W	9W
Input Voltage	AC90~300V, 50Hz			
Size (mm)	ø98x77(H)	ø105x77(H)	ø116x87(H)	ø140x112(H)
Cut out	ø80	ø90	ø100	ø115
Colour Temperature	3000 K-6000 K			
CRI	More than 80			
Beam Angle	90 deg			
Lumens	210/240	400/435	500/560	590/720
Operating Temperature	(-20 deg to 60 deg centigrade)			

**applications:** • offices • malls • showrooms • residential

**features:** • elegant look • flushed with ceiling • die cast aluminium body

Details	SSK-W008A5-6	SSK-W014A5-5	SSK-W020A5-6	SSK-W032A5-1
Input Power	3W	7W	9W	15W
Input Voltage	AC90~300V, 50Hz			
Size (mm)	ø94x71.8(H)	ø115x79.8(H)	ø140x79(H)	ø195x92(H)
Cut out	ø71.1	ø91	ø110	ø156
Colour Temperature	3000 K-4000 K-6500 K			
CRI	More than 80			
Beam Angle	110 deg			
Lumens	180/210/210	420/490/490	630/720/720	1125/1275/1275
Operating Temperature	(-20 deg to 60 deg centigrade)			

applications: • offices • malls • showrooms • residential

features: • elegant look • flushed with ceiling • die cast aluminium body

## LED DOWN LIGHTS Lunar Series (Integrated Driver)

SYSKA LED Lunar Series Down Lights come with a built-in advantage - an Integrated Driver, altogether removing the necessity of additional circuitry. This makes them easy-to-use with just one simple fixture.





## LED DOWN LIGHTS (FLOWER)

This SYSKA LED down lights has creative light patterns that stimulate sunflower effect. It has a uniform light distribution with glare-free resemblance of an indirect light. These lights are best suited for low recess & study rooms.

Details	SSK-DL-064
Input Power	15W
Input Voltage	AC90~300V, 50Hz
Size (mm)	ø193x50(H)
Cut out (ø)	160
Colour Temperature	4000 K-5000 K
CRI	More than 80
Beam Angle	38 deg
Lumens	1200
Operating Temperature	(-20 deg to 60 deg centigrade)

**applications:** • offices • malls • showrooms • residential

**features:** • good light distribution • SMD base • diamond clear lens

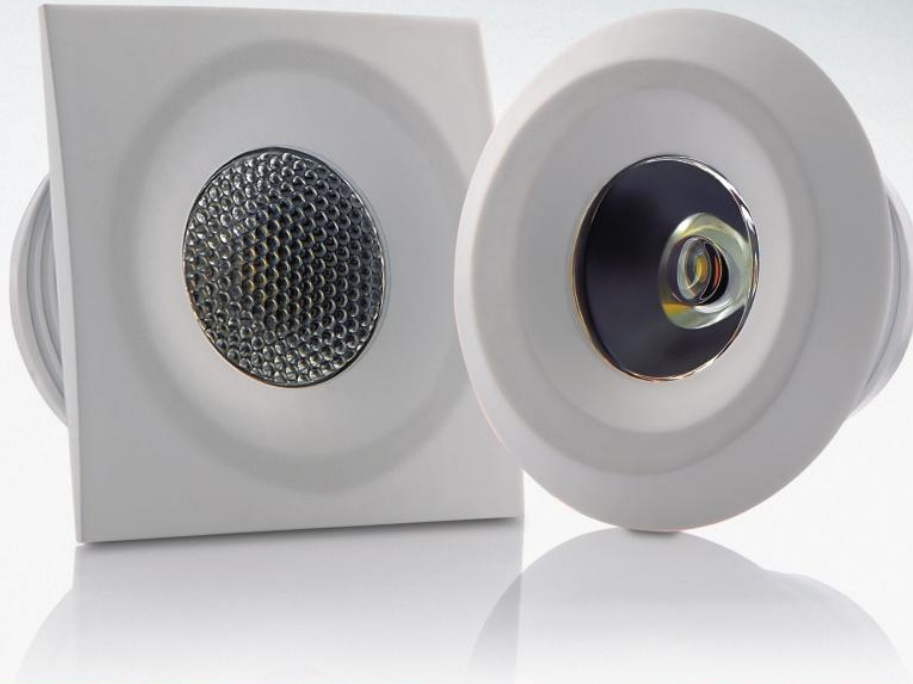
Details	SSK-SW-R-3W-C	SSK-SW-R-3W-F	SSK-SW-S-3W-C	SSK-SW-S-3W-F
Shape	Round	Round	Square	Square
Input Power	3W			
Input Voltage	AC90~300V, 50Hz			
Lens Type	Clear	Frosted	Clear	Frosted
Size (mm)	50x18	50x18	50x50x18	50x50x18
Cut out (∅)	43	43	43x43	43x43
Colour Temperature	3000 K-6500 K			
CRI	More than 85			
Operating Temperature	[-20 deg to 60 deg centigrade]			
Lumens	240			

- applications:** • homes • offices • lobbies • corridors • cabinets  
 • substitute for compact fluorescent lamps & traditional halogen lamps

## LED CABINET LIGHT 3W (SWIVEL)

An additional provision of swivel and angle orientation makes these cabinet lights differs from the regular static lights. Orientation of fixture helps to adjust the light spot in 0-60° angle as required. Preferred spot light patterns can be created on wall by fixing them in recess arrangement therefore making these lights best suited for object lighting.





## LED CABINET LIGHT (ROUND /SQUARE)

SYSKA Cabinet light series are the spot light application that has optimum light output with an installation structure that covers the recess arrangement in cabinets, shells and closets. Ideal for decorative purposes as are available in various colors that could create patterns on any object.

Details	SSK-CL-R-2W-C	SSK-CL-R-2W-F	SSK-CL-S-2W-C	SSK-CL-S-2W-F
Input Power	2W			
Input Voltage	AC90~300V, 50Hz			
Lens Type	Clear	Frosted	Clear	Frosted
Size (cut out)	ø34x18(H)			
Colour Temperature	3000 K-6500 K			
CRI	More than 85			
Operating Temperature	[-20 deg to 60 deg centigrade]			
Shape	Round		Square	
Lumens	160			

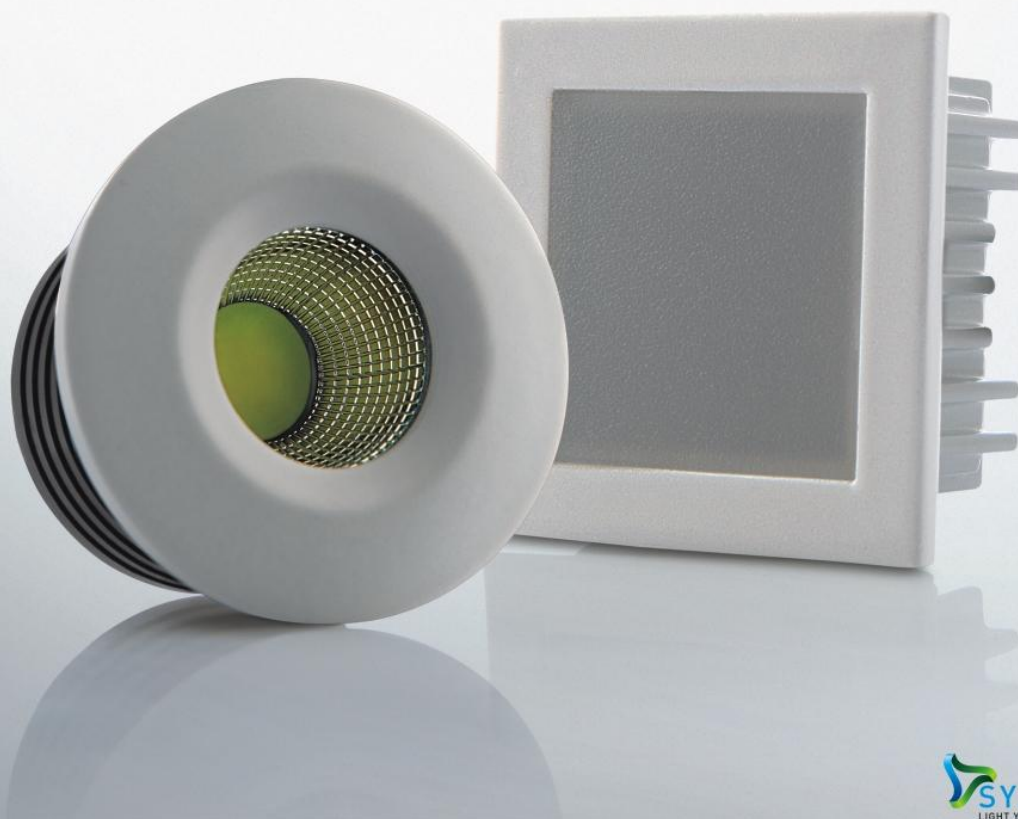
**applications:** • homes • offices • lobbies • corridors • cabinets  
• substitute for halogen lamps

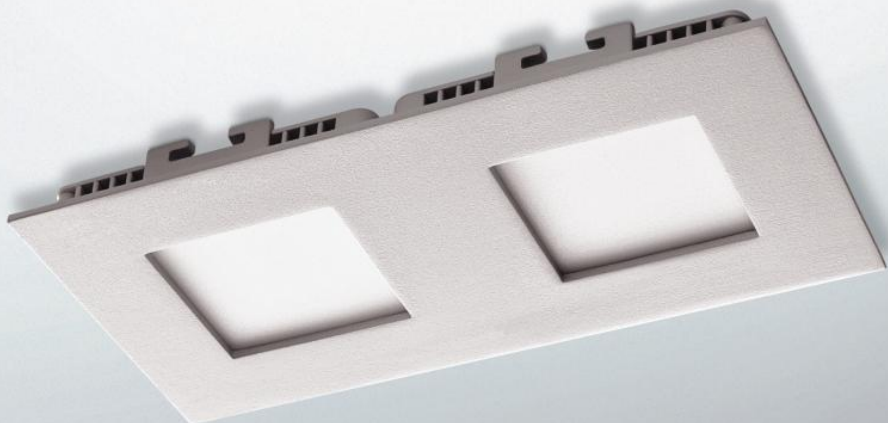
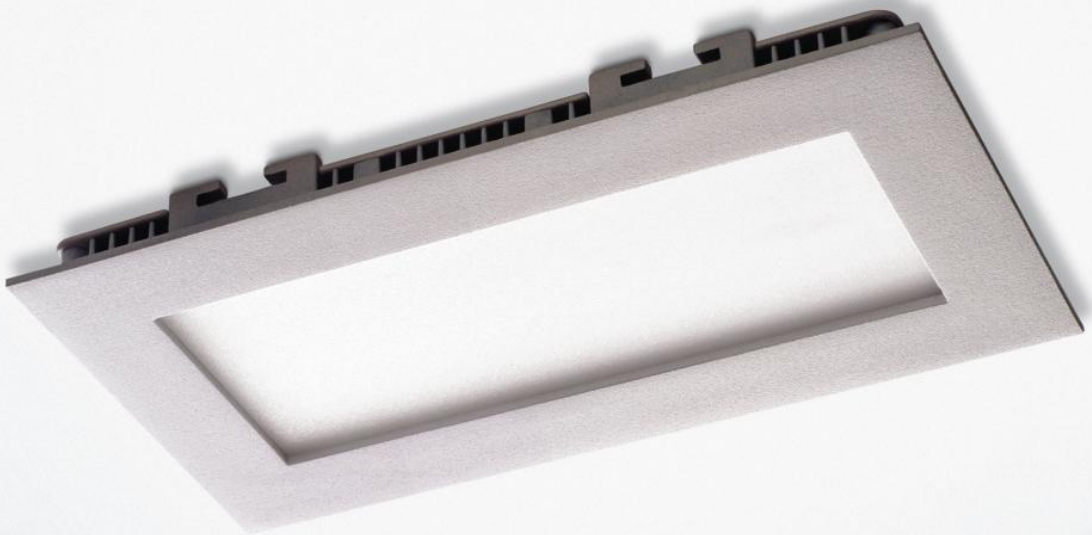
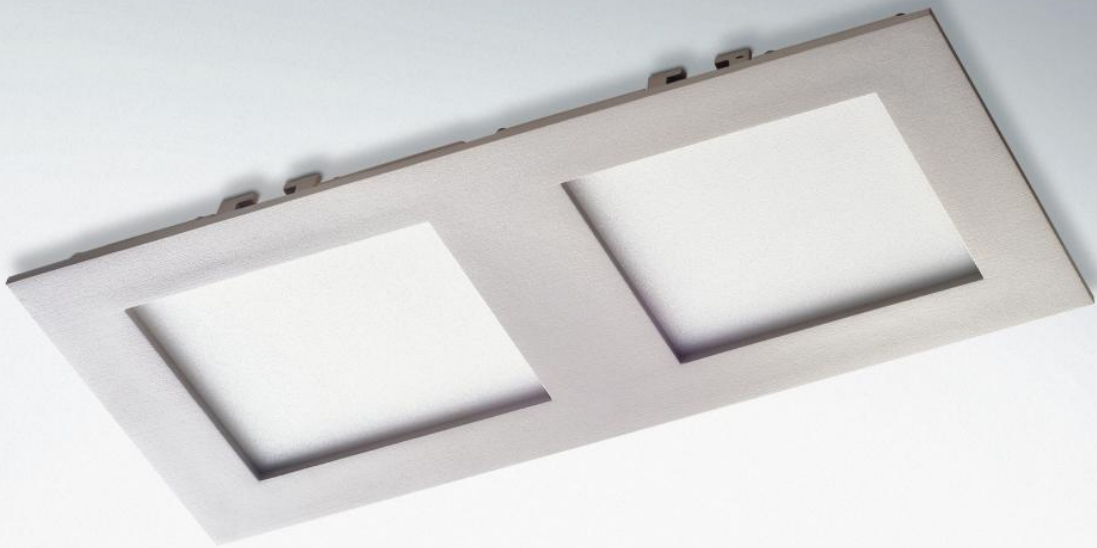
Details	SSK-SM-R-2W	SSK-COB-R-2W	SSK-SM-S-2W	SSK-COB-S-2W
LED Type	SMD	COB	SMD	COB
Input Power	2W			
Input Voltage	AC90~300V, 50Hz			
Lens Type	Frosted/Clear			
Size (H x W x L) mm	ø42x18		40x40x18	
Cut out (ø)	30		32x32	
Colour Temperature	3000 K-6500 K			
CRI	More than 85			
Lumens	160			
Operating Temperature	[-20 deg to 60 deg centigrade]			

**applications:** • homes • offices • lobbies • corridors • cabinets  
 • substitute for halogen lamps

## LED CABINET LIGHT (ROUND & SQUARE) 2W

These SMD cabinet lights with a wide beam angle and uniform light distribution area are the best option for spaces with glare free environment. The COB cabinet lights offer a high color rendering index that works perfect for a very relative and artistic light creation. A spot created by this light offers a perfect cone of light with a designed beam angle pattern, therefore ideal for museums, jewelry, architectural designs, and precious object lighting.







## RECTANGULAR PANEL LIGHTS

These rectangular panel lights differentiate themselves from the other regular square shape panel lights. These panels offer a wider illumination area, creating a symmetrical lighting pattern desired for any rectangular spaces like drawing room, hallways, lobby area, passage areas, dividing light in two forms offers a very efficient thermal dissipation and in turn offers life to the light.

Details	SSK-DLR-1S11	SSK-DLR-2S15	SSK-DLR-2S30
Input Power	11W	15W	30W
Input Voltage	AC 90~300V, 50Hz		
Power Factor	More than 0.95		
Colour Temperature	3000 K-4000 K-6500 K		
CRI	More than 85		
Lumens	830	870	1900
Operating Temperature	[-20 deg to 60 deg centigrade]		
Size (mm)	207x109x19	207x109x19	313x168x19

**applications:** • homes • offices • lobbies • corridors  
• substitute for compact fluorescent down lights

**features:** • flush with recess • lasts long (> 50,000 burning hrs.)  
• wide operating voltage • very low heating • eco-friendly



## LED CEILING LIGHTS

Aesthetically designed ceiling lights are best suitable for home lighting, hallway and commercial lighting. These lights offer a picturesque look for ceiling and exhibit a vintage ambience with a variety of color temperature offered. And most importantly the higher CRI helps to maintain original shades of commodity in chosen premises.

Details	SSK-018401	SSK-018402	SSK-018403	SSK-Moden-01
Input Power	9W	12W	18W	30W
Input Voltage	AC 90~300V, 50Hz			
Power Factor	More than 0.95			
Colour Temperature	3000 K-4000 K-6000 K			
CRI	More than 85			
Beam Angle	Upto 180 deg			
Lumens	420/440/500	510/600/620	900/935/980	1600/1900/2100
Operating Temperature	[-20 deg to 60 deg centigrade]			
Size	255x105	340x105	410x105	450x130

**applications:** • homes • offices • lobbies • corridors  
• substitute for conventional light with CFL lamps

**features:** • up to 80% energy saving • lasts long (> 20000 burning hrs.)  
• wide operating voltage • very low heating • eco-friendly



## LED CEILING LIGHTS (With PIR Sensor)

This variant of Ceiling Lights by SSK LED is designed for convenience. They come equipped with a sensor that enables automatic functioning of the lights. They are perfect for parking lots, corridors, walkways etc. They are elegant looking lights that turn off and on as and when they detect movement.

Details	SSL-CL-02-12W	SSK-CLS-01-15W with sensor	SSK-CL-02-15W	SSK-CLS-02-15W with sensor
Input Power	12W	12W	15W	15W
Input Voltage	AC 90~300V, 50Hz			
Colour Temperature	3000 K-6500 K			
Lumens	1100	1100	1350	1350
Operating Temperature	(-20 deg to 60 deg centigrade)			

**applications:** • homes • offices • lobbies • corridors  
• substitute for CFL base ceiling light

**features:** • up to 80% energy saving • comes with or without sensor  
• lasts long (> 50,000 burning hrs.) • wide operating voltage



## LED SURFACE DOWN LIGHTS (ROUND)

These surface mounted lights overcome the constraints of non-availability of recess arrangement. Their user friendly mounting arrangements along with a well finished light body creates an elegant look for the ceiling. A glare free light pattern and wide beam angle offers a unique solution for surface lighting needs.

Details	SSK-SDC-8W	SSK-SDC-11W	SSK-SDC-22W	SSK-SDC-30W
Input Power	8W	11W	22W	30W
Input Voltage	AC 90~300V, 50Hz			
Power Factor	More than 0.90			
Colour Temperature	3000 K-4000 K-6500 K			
CRI	More than 80			
Lumens	530	820	1100	1990
Operating Temperature	(-20 deg to 60 deg centigrade)			
Size (mm)	ø117x39	ø180x39	ø240x39	ø300x39
Body Colour	White/Black			

**applications:** • homes • offices • lobbies • corridors • substitute for conventional down lights

**features:** • up to 80% energy saving • comes with or without sensor  
• lasts long (> 20000 burning hrs.) • wide operating voltage



## LED SURFACE DOWN LIGHTS (SQUARE)

These surface mounted lights overcome the constraints of non-availability of recess arrangement. Their user friendly mounting arrangements along with a well finished light body creates an elegant look for the ceiling. A glare free light pattern and wide beam angle offers a unique solution for surface lighting needs.

Details	SSK-SDS-8W	SSK-SDS-15W	SSK-SDS-22W	SSK-SDS-30W
Input Power	8W	15W	22W	30W
Input Voltage	AC 90-300V, 50Hz			
Power Factor	More than 0.95			
Colour Temperature	3000 K-4000 K-6500 K			
CRI	More than 80			
Lumens	460	980	1650	2150
Operating Temperature	(-20 deg to 60 deg centigrade)			
Size (mm)	108x39	168x39	220x39	300x39
Body Colour	White/Black			

**applications:** • homes • offices • lobbies • corridors • substitute for conventional down lights

**features:** • up to 80% energy saving • comes with or without sensor • lasts long (> 20000 burning hrs.) • wide operating voltage • very low heating • eco-friendly • no mercury inside lamp



## LED PANEL LIGHTS

Best used to light up office spaces, workstations, etc. SYSKA LED Light Panels are available in a variety of sizes and are designed to meet all your indoor lighting needs. Their edge-lit LED panel lights give a glare-free uniformity in illumination.

Details	SSL-PL-8W	SSK-PL-10W	SSK-PL-15W	SSK-PL-20W
Input Power	8W	10W	15W	20W
Input Voltage	AC 90-300V, 50Hz			
Power Factor	More than 0.95			
Colour Temperature	4000 K-6500 K			
CRI	More than 85			
Beam Angle	Upto 170 deg			
Lumens	600	750	1125	1500
Finish	Powder Coating			
Operating Temperature	(-20 deg to 60 deg centigrade)			
Frame	Extruded Aluminium Frame			
Size	4"x4"	6"x 6"	7"x7"	8"x8"

**applications:** • offices and conference rooms • homes and work tables  
• hallways and galleries • showrooms and shopping malls • workstations

**features:** • long life span (50,000 hrs.) • eco-friendly and energy saving  
• no uv/ir radiation

Details	SSK-PL-24W-1 X 1	SSK-PL-36W-2 X 2	SSK-PL-45W-2 X 2
Input Power	24W	36W	45W
Input Voltage	AC 90-300V, 50 Hz		
Power Factor	More than 0.95		
Colour Temperature	4000 K - 6500 K		
CRI	More than 85		
Beam Angle	Upto 170 deg		
Lumens	1800	3000	3600
Finish	Powder Coating		
Frame	Extruded Aluminum Frame		
Operating Temperature	(-20 deg to +60 deg centigrade)		
Size	1x1	2x2	2x2

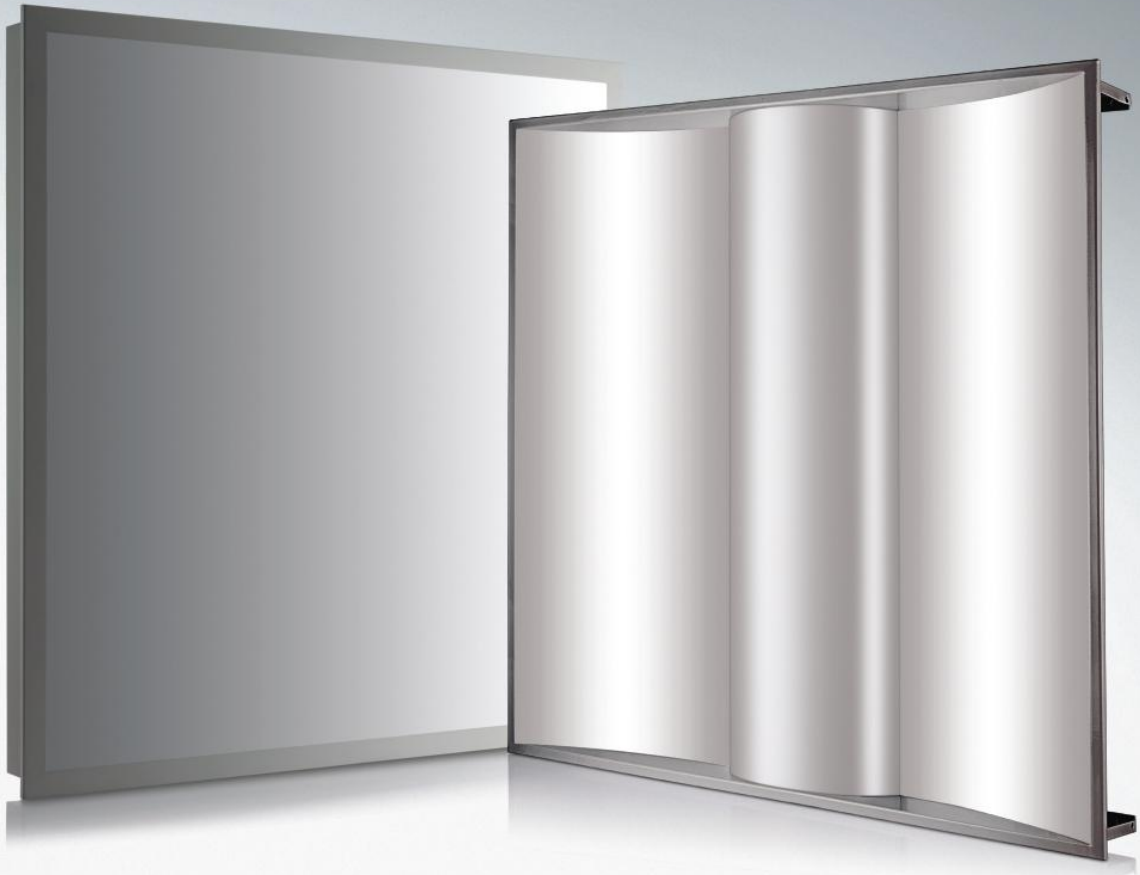
**applications:** • offices and conference rooms • homes and work tables  
• hallways and galleries • showrooms and shopping malls • workstations

**features:** • long life span (50,000 hrs.) • eco-friendly and energy saving  
• no uv/ir radiation

## LED PANEL LIGHTS

SYSKA LED Light Panels are crafted for luxury. Their powder coated aluminium extrusion and smooth borders are a perfect solution for your high-end interior lighting. Their primary usage includes lighting up of homes, office cabins, etc.





## LED PANEL LIGHTS

SYSKA LED Panels Lights are crafted for luxury. Their frosted cover and slim frame makes them perfect for your high-end interior lighting. Their primary usage includes lighting up of homes, office cabins, etc.

Details	CENTER-LIT SSK-PAB-6060A	BACK-LIT SSK-PAB-6060B
Input Power	36W	
Input Voltage	AC 90~300V, 50Hz	
Size (mm)	595x595x60	
Colour Temperature	6500 K	
CRI	More than 80	
Beam Angle	>150 deg	
Lumens	>3200	>3000
Operating Temperature	(-20 deg to +60 deg centigrade)	
Power Factor	More than 0.9	

**applications:** • offices • malls • showrooms • residential

**features:** • elegant look • extruded aluminium frame • frosted cover • slim panel

\*efficiency: 103lm/Watt



Details	SSK-PL-8W	SSK-PLL-16W
Input Power	8W	16W
Input Voltage	AC90~300V, 50Hz	
Colour Temperature	3000 K-4000 K-6500 K	
Lumens	650/680/700	1350/1390/1440
Operating Temperature	[-20 deg to 60 deg centigrade]	
Length	6"	16"
PF (Power Factor)	More than 0.9	
CRI	More than 80	

**applications:** • offices • malls • showrooms • residential

**features:** • good light distribution • SMD base • diamond clear lens

## LED PL & PLL LAMP

This Syska LED PL-L lamp with high CRI is designed to replace the conventional CFL banned PL-L lamp by offering a perfect retrofit solution in existing 2X2 Conventional panels. This lamp will easily outperform its predecessors by offering longer life cycle, high Lumens and energy efficiency that will offer more than 60% brightness.





## LED DOWNLIGHT SWIVEL RECTANGULAR

These swivel high intensity lights offer an object oriented light pattern along with sharp beam angles. The ease of mounting these lights at a recessed plane and their application on wall façade creates a unique arena of light.

Details	SSK-SWS-SMD	SSK-SWS-SMD	SSK-SWS-SMD	SSK-SWS-SMD	SSK-SWS-COB
Input Power	20W	28W	38W	48W	48W
Size	240x145x135mm; cut out 227x130				
Base	Recessed mounting clips				
Input Voltage	AC90-300V, 50Hz				
Colour Temperature	3000 K-4000 K-6500 K				
CRI	More than 85				
Beam Angle	>120 deg				
Lumens	2000	2800	3800	4800	4800
Housing	Die cast aluminium				
Operating Temperature	[-20 deg to 60 deg centigrade]				

**applications:** • showrooms • architecture lighting • spot lighting

**features:** • lower consumption and energy saving • replacement for halogen PAR lamps  
• eco-friendly • reduces co<sub>2</sub> • good colour rendering • long life span (50,000 hrs.) • no uv radiation

Details	SSK-SWR -SMD-20W	SSK-SWR -SMD-28W	SSK-SWR -SMD-38W	SSK-SWR -COB-20W	SSK-SWR -COB-28W	SSK-SWR -COB-38W
Input Power	20W	28W	38W	20W	28W	38W
Size	Dia 195x180mm. Cut out dia 170mm					
Base	Recessed					
Input Voltage	AC90-300V, 50Hz					
Colour Temperature	3000 K-4000 K-6500 K					
CRI	More than 85					
Beam Angle	>120 deg					
Lumens	2000	2800	3800	2000	2800	3800
Housing	Die cast aluminium					
Operating Temperature	[-20 deg to 60 deg centigrade]					

**applications:** • showrooms • architecture lighting • spot lighting

**features:** • lower consumption and energy saving • replacement for halogen PAR lamps  
• eco-friendly • reduces CO<sub>2</sub> • good colour rendering • long life span (50,000 hrs.) • no uv radiation

## LED DOWNLIGHT SWIVEL ROUND

These swivel high intensity lights offer an object oriented light pattern along with sharp beam angles. The ease of mounting these lights at a recessed plane and their application on wall façade creates a unique arena of light.





## LED DOWN LIGHT (MULTI- BOX MR16/AR111)

With multiple light sources that can be directionally adjusted to target beams of different angles, these lights are most suitable for showcasing jewelry or other display products that require multiple highlights. Their light weight makes them easy to mount and maintain.

Details	SSK-GR-001-1	SSK-GR-001-2	SSK-GR-002-1	SSK-GR-002-2
Input Power	15W	30W	11W	22W
Input Voltage	AC90-300V, 50Hz			
Size (mm)	200x200x106(H)	362x200x106(H)	128x128x79(H)	225x128x79(H)
Colour Temperature	4000 K-5000 K			
CRI	More than 85			
Beam Angle	38 deg			
Lumens	1200	2400	850	1700
Operating Temperature	(-20 deg to 60 deg centigrade)			

**applications:** • offices • showrooms • malls • jewelry shop

**features:** • eco-friendly • no uv radiation • easy mounting • light weight  
• adaptable with external driver



## LED BULK HEAD

Bulkheads are designed to conquer the high wattage conventional GLS/CFL lamps for the outdoor applications. These lamps offer maintenance friendly solutions, elegant look and are mainly used as wall light and surface light.

<b>Details</b>	<b>SSK-BH-9W</b>
<b>Input Power</b>	9W
<b>Input Voltage</b>	AC90~300V, 50Hz
<b>Size (mm)</b>	230x100(H)
<b>Colour Temperature</b>	3000 K-6500 K
<b>IP</b>	IP65
<b>Finish</b>	Powder coating
<b>Housing</b>	Die cast housing
<b>Lumens</b>	720(+/-5%+)
<b>Operating Temperature</b>	(-20 deg to 60 deg centigrade)

**applications:** • showrooms • residential

**features:** • good light distribution • SMD base



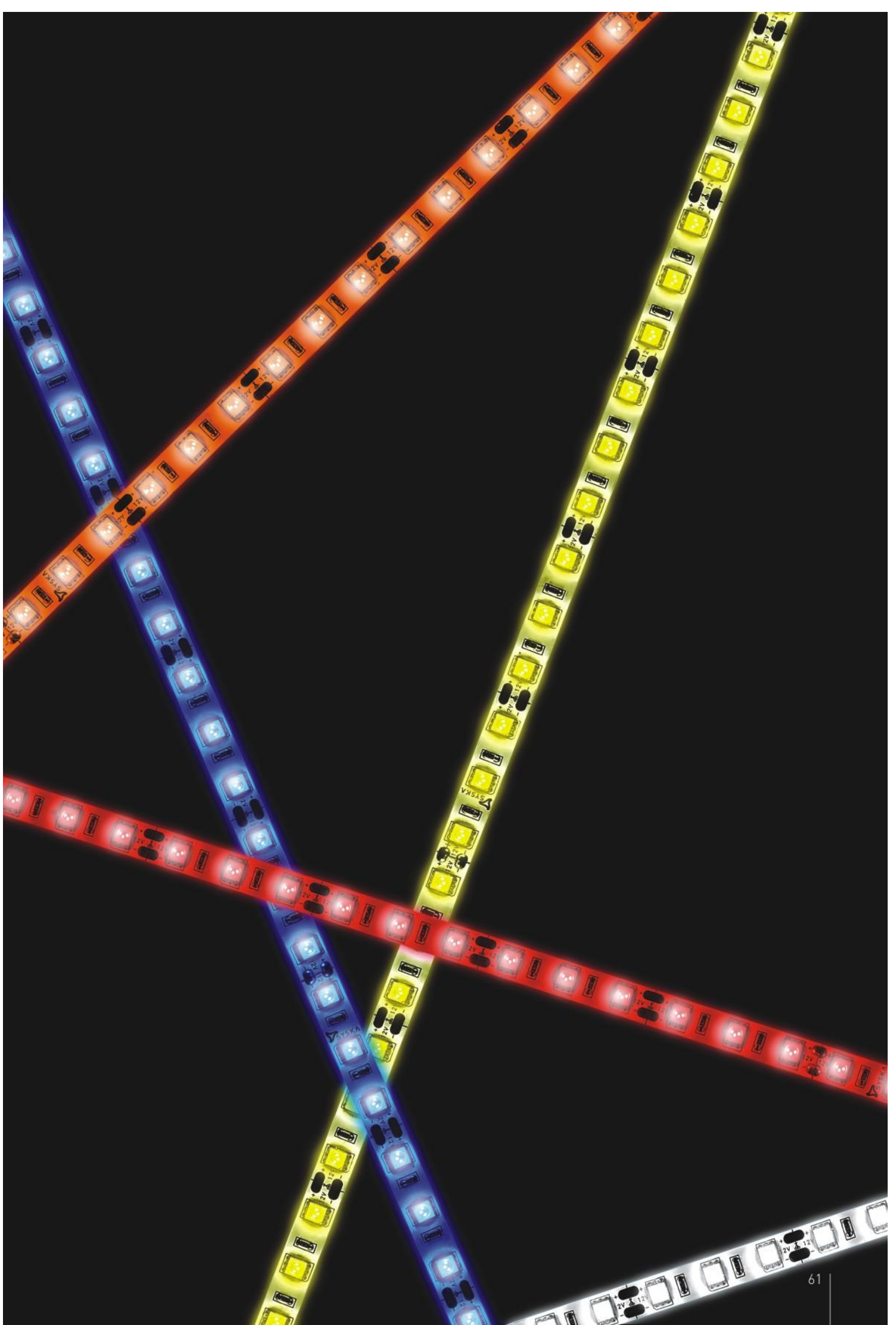
# LED TRACK LIGHT

Mounted on long guide-rails that define the required lighting-space, these lights can be physically moved anywhere along the rail-path, and can be grouped or set apart, giving you any number of fixed light source combinations. They are ideal for high-ceiling studio settings where variable lighting is required.

Details	SSK-TR-011	SSK-TR-004	SSK-TR-003	SSK-TR-001	SSK-TR-009	SSK-TR-010
Shape	Round	Round	Round	Square	Square	Round
Input Power	8W	15W	35W	12W	35W	45W
Input Voltage	AC90~300V, 50Hz					
Size (mm)	ø50x120	ø70x130	ø90x150	ø80x166	ø115x213	ø90x160
Colour Temperature	4000 K-5000 K					
CRI	More than 85					
Beam Angle	60 deg					
Lumens	700	1300	3150	1100	1350	4000
Operating Temperature	(-20 deg to 60 deg centigrade)					

**applications:** • malls • showrooms • jewelry stores

**features:** • elegant look • accurate beam angle • high color rendering • 'cameta' lens





Details	SSK-ST-8060	SSK-ST-8060-IP	SSK-ST-5560	SSK-ST-5560-IP
Input Power	24W	24W	72W	72W
Input Voltage	AC90~300V, 50Hz			
Size (m)	5m			
Colour Temperature	WW/CW	WW/CW	WW/CW/RGB	WW/CW/RGB
LEDs per m	60			
IP	IP20	IP65	IP20	IP65
Flux/Chip	7-8 lm	7-8 lm	18-20 lm	18-20 lm
Operating Temperature	(-20 to 60 deg centigrade)			
Chip/SMD	3528	3528	5050	5050

applications: • offices • malls • showrooms • residential

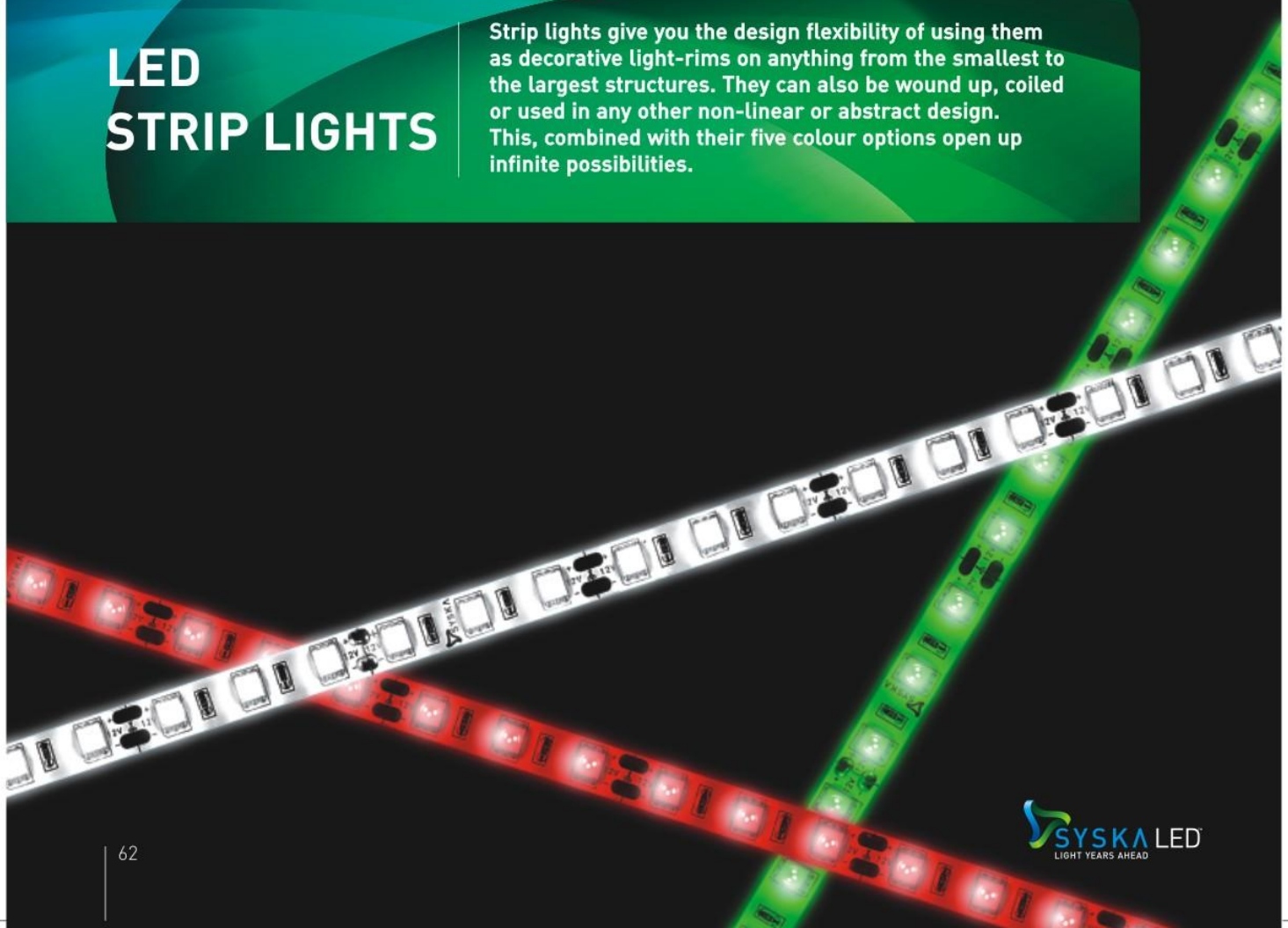
features: • elegant look • medieval ambience

Details	SSK-ST-5530	SSK-ST-5530-IP
Input Power	36W	36W
Input Voltage	AC90~300V, 50Hz	
Size (mm)	5m	
Colour Temperature	RGB	RGB
LEDs per m	30	
IP	IP20	IP65
Flux/Chip	16-18 lm	16-18 lm
Operating Temperature	(-20 to 60 deg centigrade)	
Chip/SMD	5050	5050

Sr. No	Amp	Voltage	Strip LED Type	No. of LEDs Per Mtr	SSK Strip Codes	Strip Length Suitable
1	1A	12V	3528	60	SSK-ST-8060	Upto 2Mtr
2	2A 3A	12V	3528	60	SSK-ST-8060	Upto 5Mtr
		12V	5050 RGB	30	SSK-ST-5530	Upto 5Mtr
3	5/6A	12V	5050	60	SSK-ST-5560	Upto 2Mtr
			5050 RGB	30	SSK-ST-5530	Upto 5Mtr
4			5050	60	SSK-ST-5560	Upto 5Mtr

## LED STRIP LIGHTS

Strip lights give you the design flexibility of using them as decorative light-rims on anything from the smallest to the largest structures. They can also be wound up, coiled or used in any other non-linear or abstract design. This, combined with their five colour options open up infinite possibilities.







# LIGHTING UP FOR GROWTH

SYSKA Industrial-grade Lights are specifically designed to work in harsh and extreme environments such as factory-floors, assemble lines, large manufacturing units, storage and warehousing facilities, as well as ports, airports, transport hubs and transit areas. Their ability to consistently deliver even distribution of light while functioning in highly corrosive surroundings, along with power saving and long life, make them excellent growth-drivers.



## LED WEATHERPROOF BATTEN 36W

Weather proof batten is a perfect solution for the dust proof and waterproof outdoor lighting applications. Along with offering a linear diffuser that creates a uniform lighting pattern, its light weight body, multiple mounting arrangement and waterproof connection provides user friendly installations.

Details	SSK-WP-1018	SSK-WP-1036
Input Power	18W	36W
Input Voltage	AC90~300V, 50Hz	
LED Qty	240	420
Lamp Color	Gray	
Size (L x B x H) mm	650x110x85	1260x110x85
Power Factor	0.95	
Colour Temperature	3000/4000/6000	
CRI	More than 80	
Beam Angle	120 deg	
Lumens	1500/1600/1800	3000/3300/3600
Ingress Protection	IP65	
Operating Temperature	[-20 deg to 60 deg centigrade]	
LED Driver	Constant Voltage and Current	

**applications:** • clean rooms • warehouses • factories • dairies • hospitals

**features:** • eco-friendly • moisture proof • less heating • reduces c02 • wide operating voltage

Details	SSK-HB-60 W-N	SSK-HB-80 W-N	SSK-HB-100 W-N	SSK-HB-120W-N	SSK-HB-150W-N
Input Power	60W	80W	100W	120W	150W
Input Voltage	AC90-300V, 50Hz				
Power Factor	More than 0.95				
Colour Temperature	4000 K-6500 K				
CRI	More than 85				
Beam Angle	90-150 deg				
Lumens	>5100	>6800	>8500	>10200	>12750
Finish (Reflector)	Anodized				
Housing	Pressure die cast aluminium				
Ingress Protection	IP44/IP65				
Operating Temperature	(-20 deg to 60 deg centigrade)				
LED Driver	Constant Voltage and Current				

**applications:** • industrial sheds • factories • workshops

**features:** • wide spread of light to cover maximum area  
• replacement of sodium vapour and mercury vapour high wattage lamps

## LED HI-BAY

SYSKA LED HI-BAY Lights are high intensity indoor/outdoor lights used at workshops, industrial sheds and factories. These lights possess the power to illuminate large areas with their wide dispersion without adversely affecting the environment.





# LED FLOOD/ BEAM LIGHTS

In areas where extreme brightness is desired, these emit strong beams of light. This light gets distributed evenly, leaving no dark areas. They also consume significantly lower power for the same high brightness and output, especially cost-effective in multiple arrays of power sources.

Details	SSK-BLS-10W	SSK-BLS-20W
Input Power	10W	20W
Input Voltage	AC90~300V, 50Hz	
Size (L x W) mm	115x87	180x140
Power Factor	More than 0.95	
Colour Temperature	6500 K	
CRI	More than 85	
Beam Angle	170 deg	
Lumens	900	1800
Operating Temperature	[-20 deg to 60 deg centigrade]	
LED Driver	Constant Voltage and Current	
Ingress Protection	IP65	

**applications:** • showroom • malls • area lighting • outdoor lighting • hoardings • display boards • façade lighting.

**features:** • easy retrofit for conventional • uniform distribution • eco-friendly • reduces co2 • energy saving.

Details	SSK-BLS-40W	SSK-BLS-60W	SSK-BLS-90W	SSK-BLS-120W	SSK-BLS-150W	SSK-BLS-200W	SSK-BLS-300W	SSK-BLS-500W
Input Power	40W	60W	90W	120W	150W	200W	300W	500W
Input Voltage	90-300V AC-50Hz							
Size (L x W) mm	226x186			286x236		500x578		520x530x170
Power Factor	0.95							
Colour Temperature	6500 K							
CRI	More than 85							
Beam Angle	170 deg							
Lumens	>3600	>5400	>8100	>10800	>13500	>18000	>27000	>45000
Operating Temperature	[-20 deg to 60 deg centigrade]							
LED Driver	Constant Voltage and Current							
Ingress Protection	IP65							



## LED AR111 LAMP

SYSKA LED AR111 are more powerful as compared to regular halogen lights. Their unmatched colour rendering capacity adds glory to monuments, architectural sites, showrooms etc. These are best used as façade lighting, and spot lighting.

Details	SSK-AR111
Input Power	15W-20W
Size (mm)	ø111x67
Base	G53/GU10 Base
Input Voltage	AC90-300V, 50Hz
Colour Temperature	3000 K-4000 K-6500 K
CRI	More than 80
Beam Angle	35-45 deg
Lumens	1450-1800
Housing	Die cast aluminium
Operating Temperature	[-20 deg to 60 deg centigrade]

**applications:** • showrooms • architecture lighting • hotel industry • spot lighting • high ceiling lighting

**features:** • lower consumption and energy saving • replacement for halogen PAR lamps (70W)  
• eco-friendly • reduces co<sub>2</sub> • good colour rendering • long life span (50,000 hrs.) • no uv radiation



Details	SSK-CP-60W	SSK-CP-90W	SSK-CP-100W	SSK-CP-120W
Input Power	60W	90W	100W	120W
Holder Base	Recessed			
Input Voltage	AC90~300V, 50Hz			
Colour Temperature	6500 K			
CRI	More than 85			
Beam Angle	Upto 120 deg			
Lumens	>6000	>9000	>10000	>12000
Ingress Protection	Above IP 65			
Operating Temperature	[-20 deg to 60 deg centigrade]			

**applications:** • petrol pump • canopies • gas station lighting • high ceiling lighting

**features:** • lower consumption and energy saving • eco-friendly • reduces co<sub>2</sub>  
• good colour rendering • long life span (50,000 hrs.) • no uv radiation

## LED CANOPY LIGHTS

This light is designed for out-door lighting applications like gas-stations and industrial sheds where the area illumination is achieved with high light flux and uniform pattern of lighting. Features annexed with user friendly practice of installation with all the needed accessories. The offered protection from dust and rain promotes this lighting application for a versatile use.







# LIGHT IN THE OPEN

SYSKA LED Outdoor Lights offer energy-efficient lighting solutions for various outdoor lighting applications. The extensive range can be used to light up tunnels, streets, gates, car parks, etc. They eliminate glare and are dark-sky friendly. SYSKA LED Outdoor Lights are a perfect substitute for conventional, high maintenance lighting products due to their durability and longevity.



## LED STREET LIGHTS

Used for street lighting, campus lighting and garden lighting purposes, SYSKA LED Street Lights are more energy-efficient, more environment-friendly and more illuminating as compared to regular lights. Their optic lenses give a wider dispersion of light, covering maximum areas and increasing the pole spacing.

Details	SSKSL 40W	SSKSL 60W	SSKSL 90W	SSKSL 120W	SSKSL 150W
Input Power	40W	60W	90W	120W	150W
Input Voltage	AC90~300V, 50Hz				
Power Factor	More than 0.90				
Colour Temperature	4000 K-6500 K				
CRI	More than 80				
Beam Angle	170 deg				
Lumens	4200	6300	9450	12600	15750
Finish	Powder coated				
Housing	Pressure die cast aluminium				
Ingress Protection	Up to IP 68				
Operating Temperature	(-20 deg to 60 deg centigrade)				
LED Driver	Constant Voltage and Current/Integrated				

Details	SSK-WG-25W	SSK-WG-45W	SSK-WG-60W
Input Power	25W	45W	60W
Size (mm)	ø155x182.5	ø215x75	
Input Voltage	AC90~300V, 50Hz		
Colour Temperature	3000-6500 K		
CRI	More than 75		
Beam Angle	>150 deg		
Lumens	>2250	>4000	>5500
Housing	Pressure die cast housing with transducent polycarbonate cover		
Ingress Protection	IP 66		
Operating Temperature	[-20 deg to 60 deg centigrade]		

**applications:** • industries • factories

**features:** • lower consumption and energy saving • eco-friendly • reduces co<sub>2</sub>  
 • good colour rendering • long life span (50,000 hrs.) • no uv radiation

## LED WELL GLASS LIGHTS

LED Well Glass Lights have non-sticky paint on the shell that protects from a dust covering. This integrated shell light is artistically designed for various lighting, as it exhibits optimum Lumens by illuminating a wider section of application area. Its feather weight makes it capable to absorb shocks and vibrations, best suitable for heavy manufacturing industry.





## LED COB STREET LIGHTS

Aerodynamic look enriches the aesthetics of street furniture offering higher standards of specifications and operations. Super fine die-casting mesh for effective heat dissipation offers longevity and its uniquely designed double convex elliptical lenses offer a wider beam angle stretching the spacing between the mounting columns. It's easy mounting bracket arrangement makes it compatible with the regular size of overhanging bracket.

Details	SSK-SLR-30W	SSK-SLR-50W	SSK-SLR-100W	SSK-SLR-150W	SSK-SLR-200W
Input Power	30W	50W	100W	150W	200W
No. of Lenses	1	1	2	3	4
Size (H x W x L) mm	500x220x85	585x225x95	685x235x95	815x 265x95	985x300x100
Input Voltage	AC90-300V, 50Hz				
Colour Temperature	6500 K				
CRI	More than 80				
Beam Angle	>120 deg				
Lumens	>3300	>5500	>11000	>16500	>22000
Housing	Pressure die cast aluminium housing				
Ingress Protection	Above IP66				
Operating Temperature	[-20 deg to 60 deg centigrade]				
Power Factor	>0.9				

**applications:** • street lighting • garden lighting • campus lighting

**features:** • elliptical lens gives wide spread of light to cover maximum area • lower consumption and energy saving • eco-friendly • reduces co. • good colour rendering • long life span (50,000 hrs.) • no uv radiation  
Also available in 45W, 65W, 100W, 120W, 250W

Details	SSK-ST-25W(S)	SSK-ST-40W(S)	SSK-ST-60W(S)
Input Power	25W	40W	60W
Input Voltage	90-300V AC-50Hz		
Size (L x H x W) mm	320x75x70		
Colour Temperature	3000 K-6500 K		
CRI	Less than 75		
Beam Angle	130 deg		
Lumens	2625	4320	6057
Operating Temperature	[-20 deg to 60 deg centigrade]		
Ingress Protection	IP65		
Power Factor	>0.9		

**applications:** • street lighting • garden lighting • campus lighting

**features:** • compact design specially for artinary roads, service roads, colonies  
• replacement of sodium vapour and mercury vapour high wattage lamps

## LED STREET LIGHTS

Used for street lighting, campus lighting and garden lighting purposes, SYSKA LED Street Lights are more energy-efficient, more environment-friendly and more illuminating as compared to regular lights. Their optic lenses give a wider dispersion of light, covering maximum areas and increasing the pole spacing.

