

wiser
HOME CONTROL

Schneider
Electric

Once there were smart homes,
now there are **Wiser Homes.**





**Wiser by name,
wiser by nature**

Your household appliances, your lights, your computers, your mobile phones... all used to work independently, even in smart homes.

Wiser Home Control is the first to truly integrate your electrical, multi-media and telecommunications technologies into one single user-friendly solution.

It's not just being smart, it's running your home with wisdom.



Take control by simply being Wiser

Wiser Home Control makes technologies in your home easy by providing seamless control of music, home theatre, lighting, air conditioning, sprinkler systems, curtains and shutters, security systems... you name it.

Usable anytime, anywhere even when you are away, via preset shortcuts or direct control, in the same look and feel from a wall switch, a home computer, or even your mobile phone or TV – there is no wiser way to enjoy 24/7 connectivity, comfort and convenience, entertainment and peace of mind worldwide!

For some, quality of life and lifestyle is purely a question of adding lavish décor, fixtures and furnishings to the home. For Wiser homeowners who know what the right choices are and always make them, they enjoy the ultimate control that will help save the planet, yet perpetuate the exquisite style and impeccable quality of life.

So take control and enjoy every minute of your life by simply being Wiser!



It's simpler than you think!

Just connect the Home Controller and the C-Bus system to any device at home, then you can run your home in a wiser way via a usability-optimised user interface that is intuitive and enjoyable to use every day.

The Home Controller is the interchange of the entire Wiser Home Control. It connects with the C-Bus system to bring a whole new level of functionality and connectivity throughout the home via a single user-friendly solution.

Consistent and intuitive user interface

In the past, you needed to learn how to operate a whole lot of different and often bewilderingly complicated equipment – one controller for your air-conditioner, another for your security system, yet another for your irrigation system, and still more remotes for your TV and audio equipment... It was all too hard!

Now, Wiser sets you free from the trouble with our consistent and intuitive user interface. You can control everything you want to operate with a touch – lights are turned on or off via a light bulb icon, sound systems via a speaker icon and irrigation by a tap icon... things really don't get any simpler.

You're in charge from the moment your system is set up

The user interface is more than user-friendly, it even helps you make sure your system is set up the way you like. The wireless platform, the jargon-free language, the customisable skins, all enable you to be actively and easily involved from the moment you decide to install the Wiser Home Control – no surprises from the installer, just the satisfaction that everything is exactly what you want.

Better still, when you want to change any presets, you can allow your installer to give you instant service via the secured remote access without even stepping into your home.

User Interface:

- Common, intuitive interface for all your devices
- Choice of user interface devices
- Control via your mobile phone or other web-enabled devices
- Control via email messages
- Displays up-to-the-minute news, weather, stocks and shares, etc



Home Controller:

- Ethernet and Wi-Fi based controller for your C-Bus system
- Built-in Ethernet router
- Built-in Wi-Fi access point
- Support for lighting, air conditioning, multi-room audio and other equipment
- Easy-to-understand wizard-based user interface graphics
- Built-in scene, scheduling and logic programming modules
- Easily reprogrammable from outside your home/building by installers
- Built-in secured remote internet access (WAN)

A better quality of life is as simple as 1, 2, 3, 4

The **comfort and convenience** that comes from complete control

Surround yourself with **peace of mind**



Entertainment that follows you around

The limitless possibilities that open up when you are **fully connected**

Wiser Home Control fully integrates all four benefits in the palm of your hand.



The comfort and convenience that comes from complete control

It's easy to create and manage the ambience of your entire home, and operate nearly anything from anywhere and at anytime. Just reach for your nearest control device... and you're all set.

Enjoying the day in the garden or balcony and want to listen to some music? Simply grab your mobile phone and turn on your multi-room audio system. Feel a bit cold while watching a movie? Just use your remote control to adjust the temperature via a Microsoft™ Media Centre menu on your TV.

Wiser Home Control isn't only about giving you complete control. With Wiser, things in your home can happen automatically according to your lifestyle and routine. So gently wake up on weekdays as your music slowly fades up, your curtains open and your alarm system deactivates from night mode. And when you head to work, your lights

turn off, your blinds close, your music fades and your air conditioner powers down when you touch the "Goodbye" button.

Forget to turn off the air-conditioner or bedroom lights? Don't worry. You can turn them off through your mobile phone when you are on the road, or through your office computer.



Entertainment that follows you around

Transform your living room into a home theatre. Let your favourite music travel with you from the living room to the garden and all points in between.

Ready to zone out with a movie? To enjoy optimal picture and sound quality when playing your Blu-ray discs, a perfect lighting ambience is as important as meticulously positioned and tuned AV equipment. Simply activate the "Home Theatre" scene to automatically close the curtains to eliminate external light, adjust various lights, room temperature and fan speed for the best home theatre ambience, scroll down your projection screen and turn on the disc player... Just one touch of your remote control or web tablet does it all.

You can also turn audio and visual devices on and off, and play, pause, stop or rewind the movie via Microsoft™ Media Centre on the TV screen. Choose the

"Intermission" scene to brighten the lights and pause the movie until you select the "Home Theatre" scene again.

With your Wiser-connected multi-room audio system, your favourite music will travel with you from the family room to the swimming pool and every point in between without skipping a beat.





Movie scene



TV scene



Music scene



Family scene

A movie in your theatre, a concert in your concert hall, a TV show in your studio... a well-designed home theatre delivers immersive entertainment and lets you experience the show in its purest possible sense.

Good home theatre design is meant to deliver an optimum visual and audio experience. Elements such as room shape, soundproofing, equipment, seat placement, layout and décor need to be considered. Above all, the visual experience is directly affected by the lighting in the environment. The ease of control over the ambient lighting is non-negotiable. Whether you have a multi-purpose living room or a professional-grade dedicated AV room, Wiser Home Control is the centralized control solution that suits every lifestyle and budget.

The right ambience for optimal enjoyment

A well-designed home theatre has the power to take us out of our living room or AV room and transport us into the world of the film. Movies look more vivid and realistic in a dimmed environment, and the atmosphere is more cozy and mellow. With a single touch of the icon on your tablet or touchscreen panel, or even through the Microsoft™ Media Centre, the projector screen scrolls down, the DVD plays, the lights dim and the air-con fan slows to minimize noise.

Any space becomes a unique sound gallery when connected with a multi-room audio system. You can track your favourite album or radio program from one room to another.

Gone are the days where you need to drag a portable stereo and bulky speakers around the house to move music from one room to another. Now you can plug your iPhone, iPod, internet radio, CD player or any digital music player into the Wiser-connected multi-room audio system and you can select and play your favourite music from any touchscreen panel on the wall or through a web

tablet in any room. Wiser Home Control supports and controls up to 24 zones or rooms, and each music zone can have its own local sources or play from the main source. You can play the same music throughout the home or listen to your favourite tracks in different rooms simultaneously.



Deliver audio and visual entertainment in your home theatre, while piping your favourite music to the bedroom or bathroom. That's the ultimate in home entertainment.



Surround yourself with peace of mind

Safety and security will give you peace of mind in every corner of your life.

Wiser Home Control interconnects your lights, alarms, web cameras, mobile phones and the internet. You can live safe in the knowledge that your home and family are protected at all times.

If your burglar alarm does activate, Wiser Home Control will turn on your lights and alarm to deter intruders and automatically send you a priority email alert. To make doubly sure everything is OK, you can even check your web cameras via your mobile phone or computer to see what's happening. If it's a false alarm, simply turn off your lights and reset your alarm remotely. You experience very little disruption to your day, but a whole lot of peace of mind.

Away for a long vacation? Just activate the pre-programmed "Vacation" mode on the touch screen. This arms your security system and schedules a light switching routine that makes it look like your home is occupied. If you forget to turn on the alarm when you leave home, you can arm it in a few seconds from your mobile phone. Peace of mind comes so easy when everything in your home is controllable via your mobile phone or laptop computer.



The limitless possibilities that open when you are fully connected

Remotely monitor and control your home from anywhere in the world at any time. Wiser Home Control also connects you to the world far beyond the physical boundaries of your home.

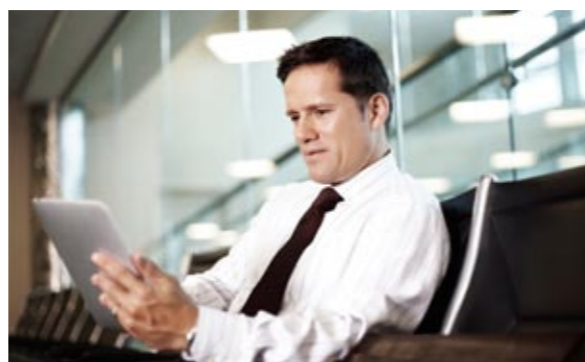
With Wiser Home Control you can use your mobile phone to monitor that all is well at home. Remote controlling all your home is no longer science fiction. You can even enhance your sense of safety by remote video monitoring of your home via your mobile phone or office PC.

Wiser Home Control also gives you an unrivalled ability to stay in touch with the world outside your front door. The system will notify you of incoming email from friends and workmates without having to switch on your PC. To keep

you one step ahead of changing trends, your wall-mounted touch-screens or web tablet will also display the latest news, traffic, financial and weather updates via RSS feeds.

You can stay close to your loved ones and the world outside no matter where you happen to be.





Remotely access, monitor and control your home. It's like being there while you're away.

With the advance of smart phones and 3.5G networks, the mobile phone is fast becoming the device where everything converges. Through your smartphone you can access social networking, play games, listen to music, shoot photos and do a lot more. Why not home control too?

Wiser Home Control incorporates encrypted wireless technology to ensure secure data transmission. You can remotely access, monitor and control your home from any

computer, your smartphone or any web-enabled device. Simply install the Wiser Application on your mobile phone and connect with Wifi or 3G. Or access it via a flash-enabled web browser in any computer. Wiser Home Control takes home control to a new level of connectivity and simplicity.

Wiser Home Control applications for iPhone, iPod Touch and iPad



Home control can be selected by location or function by clicking the (🏠) icon.



Scene control



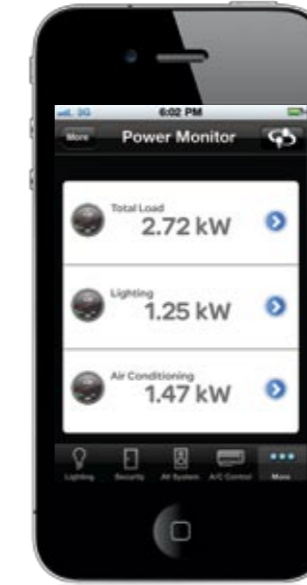
Climate control



Curtain control



Power monitoring



Individual lighting control



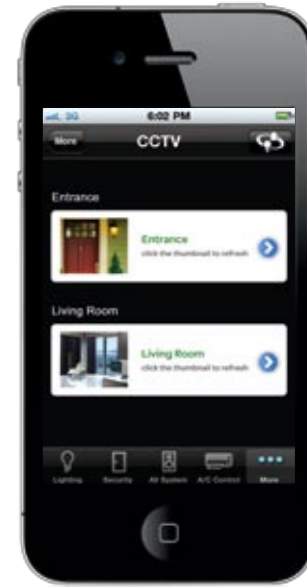
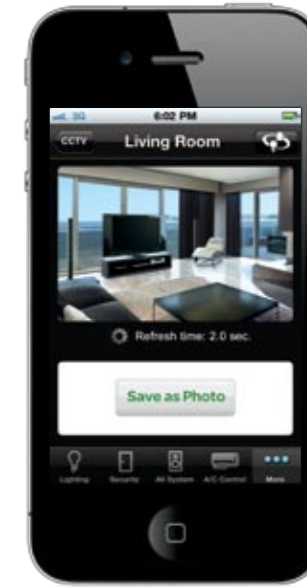
Entertainment system control



Security system control



Surveillance camera



The Wiser Home

Living Room



Lighting and Scene Control

Free yourself from the hassle of constantly tuning lights with pre-programmed lighting scenes – from romantic scenes to cinematic set ups.

Curtain/Shutter Control

Open or close the curtains automatically according to the outside light intensity to save energy... and close the curtains to block out exterior lights when activating the "Home Theatre" scene.

Climate Control

Maintain the most comfortable and energy-efficient temperature at all times.

Equipment Control

Control your TV, stereo system and projection screens via one control unit, or simply pre-programme to activate each system by scenes.

Multi-room Audio System Control

Play different audio playlists or radio stations in different rooms. Listen to surfer music in the bathroom, Mozart in the dining room and heavy metal in your workshop.

Safety & Security Monitoring

Any intrusion automatically activates surveillance cameras and alarms and notifies you via priority email alert.

Scheduling

Discourage potential intruders while you are away by turning lights and AV equipment on and off according to a pre-set schedule that imitates your presence.

Bedroom



Lighting and Scene Control

Create different scenes and moods cater every need. Turn all the lights on while you dress up, or dim down the lights when snuggling up to read your bedtime book. Simply press the remote control for pre-set scenes without disturbing yourself or your spouse.

Curtain/Shutter Control

Wake up to sunshine when your bedroom curtains automatically open according to your pre-set schedule.

Climate Control

Maintain a comfortable, energy-efficient temperature in every corner of your home at all times.

Multi-room Audio System Control

Have your radio wake you up simply by pre-set timing your favourite show. Control via the TV screen will also automatically activate the AV systems so your favourite songs follow you all over your home.

Safety & Security Monitoring

Monitor every corner of your home without leaving your bedroom and be alerted instantly when things go wrong.

Garden



Lighting and Scene Control

Laze on the sofa and activate the landscape lighting to brighten up your backyard. Create an elegant and relaxing atmosphere for entertaining outside by adding colour and style to your garden.

Multi-room Audio System Control

Select your favourite album while resting on a lounge and soaking up the sun. Or share your playlist with everybody, with the same sounds on your balcony as in your living room or any other area of your home. After sunset, switch the broadcast to your favourite radio show.

Safety & Security Monitoring

Add to your sense of safety and security by lighting up your garden and illuminating your steps. Worried about unexpected intruders entering your home? Simply arm your house by activating the security mode and to be instantly alerted should anything go wrong.

Kitchen



Lighting Control

Enlighten your cooking and display your dishes in the best possible light with the ideal light levels.

Climate Control

Stay cool. The food should cook, not you.

Equipment Control

You can turn your oven or washing machine on and off via the touch screen panel or through your personal computer.

Multi-room Audio System Control

Rustle up dinner to music or follow new recipes from your favourite TV chefs.

Safety & Security Monitoring

Wiser-connected gas, smoke and water leakage detectors minimise the chance of home accidents, a priority email alerts you automatically when a leak is detected.

Dining Room



Lighting and Scene Control

Activate the "Party" scene to heighten everyone's spirits or the "Family Dinner" scene for warmer, more relaxed gatherings.

Climate Control

Maintain the most comfortable and energy-efficient temperature at all times.

Multi-room Audio System Control

Play a CD and your favourite music can travel with you from the dining room to every area of your home.

Safety & Security Monitoring

An intrusion into your home activates a security system connected to surveillance cameras and alarms, and a priority email alert is automatically sent to you.

Power Monitoring

Conducting regular checks on energy consumption levels helps you to go green and save electricity costs.

Entrance



Lighting Control

Simply press the pre-set "All-off" button to turn off all lights when you leave the house.

Entrance Control

Lock and unlock entrances easily without digging around for keys.

Safety & Security Monitoring

Arm your house by activating the security system to "Away" mode. If someone breaks in, the alarm is automatically triggered, and a priority email alert automatically sent to you.

RSS News Feed

Access up-to-the-minute weather or traffic information and news headlines before you leave home.

Email Notification

Incoming email appears on the Wiser screen so you never miss anything.

Power Monitoring

Track your daily energy consumption via the Power Monitoring Meter and take instant action when miss your green target.

Bathroom



Lighting and Scene Control

With the touch of a pre-programmed scene your bathroom transforms into a spa. Enjoy your Jacuzzi!

Multi-room Audio System Control

Hear your favourite music in the bathroom and anywhere else in your home. Relax in the bath with [The Trout by Schubert or] Handel's Water Music and dream to immortal jazz in your bedroom.

Garage



Entrance Control

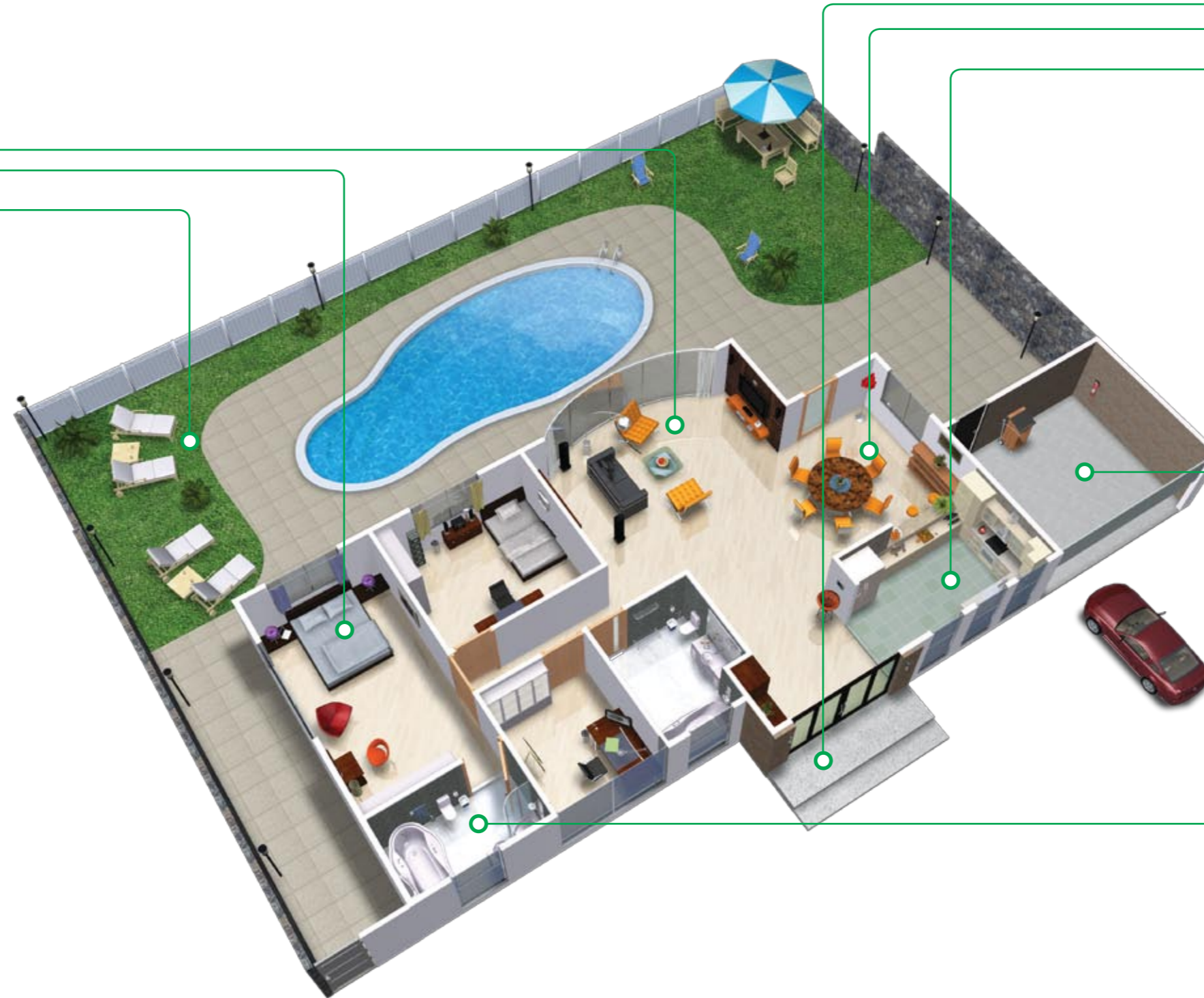
Open and close the garage door from inside your car.

Sensory System

Occupancy sensors instantly activate your garage lights when movement is detected.

Safety & Security Monitoring

A home intrusion will activate an alarm and a priority email alert will be sent to you automatically.



Wisdom with an attitude.

Stylish, Living Well and Eco-Friendly



Live with wisdom! Know the right choice and always make it! The days when being more energy-efficient and environmentally responsible meant leading a more frugal life have long gone. With **Wiser Home Control**, you won't need to compromise your home's style or sacrifice your family's quality of life by cutting down on lights or switching off your air-conditioner to be more "eco-friendly".

All you really have to do is to plan more innovatively, and needless to say **Wiser Home Control** will take care of all that for you! So get set to monitor your energy consumption...

schedule your cooling or heating times... fine tune your cooling or heating in line with external weather conditions... adjust your lamps to natural lighting levels... automatically switch on or off lights when entering or leaving a room... and more!

With **Wiser**, it really is possible to achieve more while using less power. The impressive end result is a more stylish and comfortable lifestyle at energy efficiency levels that will ensure you are a role model for the entire neighbourhood.



A new way of approaching environmental awareness and sustainability

Wiser Homes go beyond looks and comfort. With Wiser you can add a new dimension to energy efficiency in the trend towards green living, while enjoying the ultimate control at home.

Designer lamps and chandeliers do not have to be swapped for fluorescent tubes, or air-conditioners for fans, to save energy. With Wiser, it's all about optimization for a new way of approaching environmental awareness and sustainability.

Wiser Home Control provides the ultimate control while automation makes energy saving happen. You can enjoy the optimal scenes with one touch by recalling optimized pre-sets for sustainable savings every time. You can also manage your energy consumption according to occupancy, natural light level and time of the day using Wiser's sensors and time scheduling function.

Wiser's power monitoring function gives you a real time visualization of your energy usage at home in terms of kilowatt hours, dollar terms or carbon footprint. By knowing your energy habits and monitoring your energy usage, you will be able to optimize the use of energy and minimize wastage through Wiser various functionalities.

Always within reach and user-friendly, you can now enjoy all the benefits of Wiser Home Control while optimizing your energy usage. Now that's truly the way forward.

Automation makes energy saving happen

Save energy according to occupancy, light level, time of day and temperature

Always forget to turn lights off? With the use of occupancy sensors, lights as well as pre-set scenes automatically turn on or off as you move from one room to another. The light level can also be adjusted automatically depending on the availability of natural light for a constant brightness of the room.

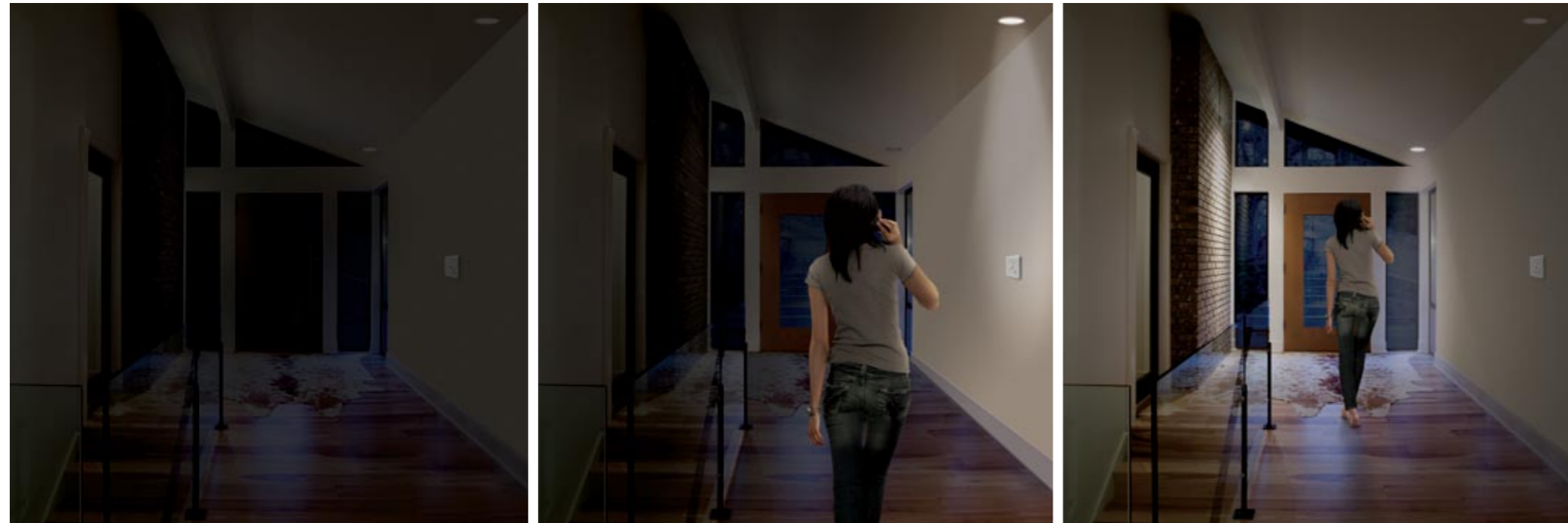
Enjoy the best ambience while optimizing energy consumption

Not every occasion needs the lights wasting power at their maximum brightness. You don't need to turn

everything off to save energy. Simply recall a pre-set scene to enjoy optimal ambience while eliminating wastage.

Time scheduling ensures peace of mind while providing energy savings

Instead of wasting energy pretending you're at home by turning the lights all day, simply create different presets for different times that turn lights on and off to discourage intruders while saving energy too.



Simplicity encourages green habits

Power in the palm of your hand

The power monitoring function lets you see your current, daily, weekly and monthly energy usage at a glance in kilowatts hours, energy cost or carbon footprint. You can monitor your energy usage with your iPhone or computer anytime anywhere.

Remote access allows 100% flexibility to eliminate wastage

Log in to your network with your mobile phone or computer to check if you have left something on after you've left home. Simply turn it off remotely rather than wasting power until you get home.

Intuitive and consistent graphic user interface encourages good habits

The user interface features self-explanatory icons and jargon-free language and is consistent across different control devices. It's easy to learn and easy to use. You don't need to buy additional portable devices because you can use your iPhone for home control.

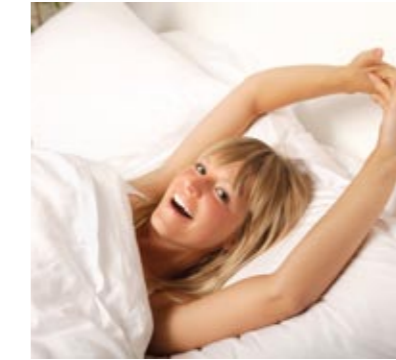
The wiser way to run your home...

07:00am



Wake up gently to my surroundings

No harsh screaming alarm clocks in my home! My Wiser Home Control wakes me gently by...



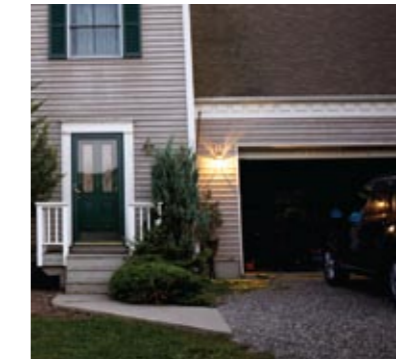
- Slowly fading up bed lamps, followed by kitchen and living area lights
- Activating the radio on the multi-room audio system in the bathroom, bedroom and living room
- Opening curtains throughout the house
- Fine tuning the temperature of the air conditioning/heating system

08:00am



The stress-free way to head off to work

It's time for me to head off to the office and for my wife to take our kids to school before going to work. I check the weather and traffic on the touch screen near the main door before leaving home, then press the "Goodbye" scene and let Wiser Home Control take care of all the rest...



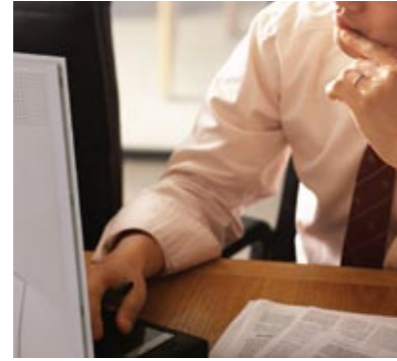
- Opens the garage door as I walk out
- Turns off all the lights and appliances
- Turns off the air conditioning/heating system
- Closes the curtains in my living room
- Activates the "Out-of-home" mode surveillance camera and security alarm

11:00am



The house alarm has gone off!

I'm sitting in a meeting when a priority email arrives on my phone informing me the house alarm has been triggered! No need to panic – I simply check our home from my laptop or via the web browser on my mobile phone by logging into our Home Controller and accessing the web cameras. Happily, it's only our cat, so I...



- Reset the alarm system
- Press the "All-off" button to turn off the lights that have automatically turned on to deter intruders
- Return to my meeting with only minimal interruption

07:00pm



Relax over dinner

After a long day at work, what could be more satisfying than kicking back and enjoying a meal with my family! By simply pressing the web tablet on the kitchen bench top, I can activate the "Dining" mode and...



- Dim the lights over the dining table
- Turn on the multi-room audio system
- Select some cool jazz from the audio player
- Close the blinds

04:00pm



My wife returns home with the kids

As my wife pulls into the driveway, she presses the "Welcome Home" button on her mobile phone... and all of the following things start happening...



- The garage door opens
- The curtains open
- Hallway and kitchen lights turn on... but only if they're needed
- The air conditioning/heating system turns on
- Security system disarms
- Her favourite radio station starts playing through the multi-room audio system
- She checks our power usage via Wiser's Power Monitoring system

08:30pm



Enjoy some "us time" watching a movie

The kids are tucked up in bed, the dishes are done, it's time for us to relax with a movie! I recline in my favourite chair and press the "Home Theatre" mode on my remote control...



- Slowly fading down the lights
- Closing the curtains
- Turning on our flat screen TV
- Powering up our media center and surround sound system
- I then select the movie and press play

09:30pm



Intermission

Time for a cup of coffee and some chocolate biccies! So I grab the remote control, and use the menu on my TV to...



- Pause the movie
- Fade up the lamp
- Turn on the kitchen lights
- It's getting cool, so I turn up the temperature too
- Check the web cameras and make sure the kids are asleep
- Press the "Resume" button, causing the lights to fade and the movie to start again

10:30pm



And so to bed!

I press the "Goodnight" scene on the desktop touch screen next to my bed and...



- All of the curtains and blinds close
- Lights and lamps slowly fade
- Power to standby devices such as the TV and washing machine are turned off in order to save electricity
- The air conditioning system goes into "Set Back" mode - also saving power
- "Night" mode is automatically activated on the security system

Weekends



The weekend starts here!

Great weather, great friends, great times - a summer BBQ... does life really get any better than this? I press the "Entertain" scene on my touch screen and let Wisers Home Control take care of the rest...



- Music turns on in the family room, kitchen and patio
- The "Party" play list starts booming out of my audio player
- Garden lights and water features set the mood
- Ceiling fans keep a cool breeze moving above the dining table
- I can even take the web tablet out with me to dim the lights, select songs and pump up the volume as the party livens up

Holidays



It's holiday time!

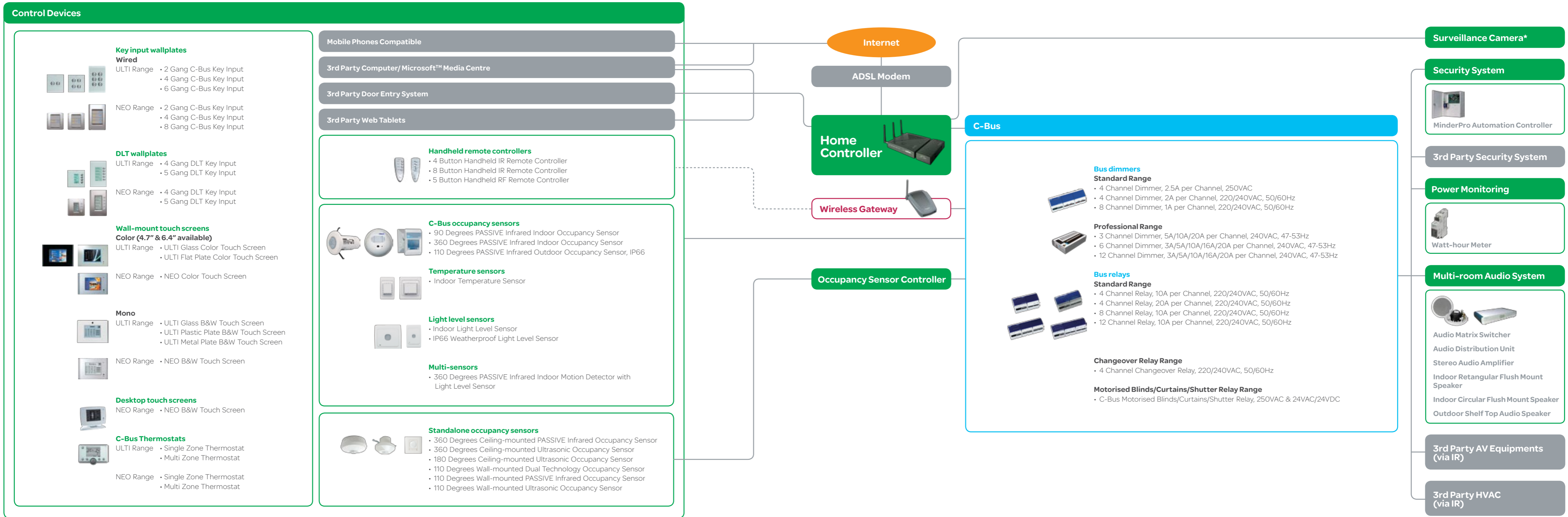
Before we all head to the airport for our hard-earned week off, I double-check everything is fine at home, then press the "Vacation" mode on the touch screen, automatically...



- Turning off all of the lights and appliances
- Closing the curtains
- Turning on the alarm system
- While we are away, Wisers will automatically turn lights and music on and off as well as opening and closing the curtains to make it look like we are home
- I can even control my home with Wisers Home Control's remote access capability

Wiser Home Control System Architecture









About Schneider Electric

As the global specialist in energy management with operations in more than 100 countries, Schneider Electric offers integrated solutions across multiple market segments, including leadership positions in energy and infrastructure, industrial processes, building automation, and data centres/networks, as well as a broad presence in residential applications. Focused on making energy safe, reliable, and efficient, the company's 110,000 plus employees achieved sales of 19.6 billion euros in 2010, through an active commitment to help individuals and organizations "Make the most of their energy".

The LifeSpace Business of Schneider Electric provides solutions that represent the best in lifestyle and innovation for offices, hotels and homes. These solutions include award-winning products in the areas of building and home automation, structured cabling, and designer switches and sockets. They help the finest architectures around the world to achieve more with less.

www.schneider-electric.com

