



General Accessories

Eldon's wide range of accessories makes it possible to meet individual customer and user requirements for the majority of applications. Eldon's general accessory range includes the following products:

- Lighting systems, to help customers perform maintenance tasks inside the enclosure, when needed, or to increase visibility inside the enclosure when accessed during the night;
- Profile accessories, including DIN rails and mounting material, to allow for easy installation of electrical equipment inside the enclosure;
- Cans of paint and cleaning products, not only to achieve the desired aesthetic appearance, but to also contribute to ensuring long enclosure lifetime;
- Earthing accessories, to establish safe earthing connections and to help customers fulfil all safety regulations and standards;
- Document pocket, which is a versatile, self-adhesive pocket for DIN A4 documents.

Eldon provides several solutions for the above listed accessories, where special requirements are frequently requested and met. The lighting range includes both fluorescent and LED lights, as well as different cables, to make all the necessary connections. Door-operated switches are also available, so that lights are automatically switched on whenever the enclosure door is opened.

General Accessories

Typical Application | General Accessories

- Process automation
- System integrators
- Machines
- Control systems

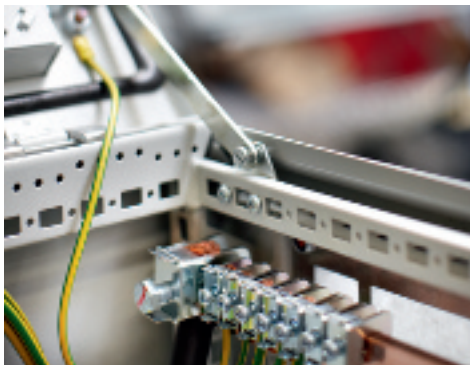


Eldon offers a wide range of general accessories for the most common applications, from DIN rails and fixing material for mounting electrical components, to lights that allow better visibility inside the enclosure and even paint for re-touching customer made cutouts. All the accessories are designed to suit the most specific requirements.



Railway control system

The enclosures in this application were placed inside a tunnel where the external lighting conditions may be poor. In order to be able to perform maintenance tasks properly and examine the components inside the enclosures, TLC lights were installed. TLCS switches were used to automatically operate each light whenever the enclosure door is opened or closed.



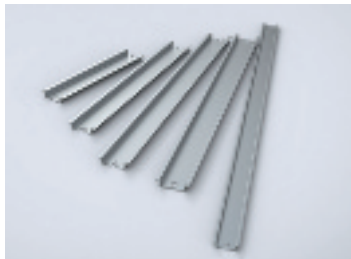
Control enclosure

Fulfilling all safety regulations and standards is a necessity in all applications. To achieve this, one of the tasks that must be carried out is to perform proper earthing connections between all the enclosure parts. In this application, an ECFA cable provided the means to electrically connect the enclosure body and door. This is particularly important when electrical equipment is installed on the door, as it was done in this application.



Lights easy to install

Eldon's enclosure lights offer different mounting possibilities: screw mounting, magnetic mounting and even by a click-in feature for 19" swing frames. This saves users time and makes Eldon's lighting systems easy to work with.



Wide range of available DIN rails

There are several different DIN rails that can be used. Depending on the electrical equipment that is used, one DIN rail type or another will need to be chosen. Eldon offers different DIN rails for more flexibility.



Full range of cables

Eldon offers a wide range of cables to connect lights and door switches to control the light operation by simply opening and closing the door.

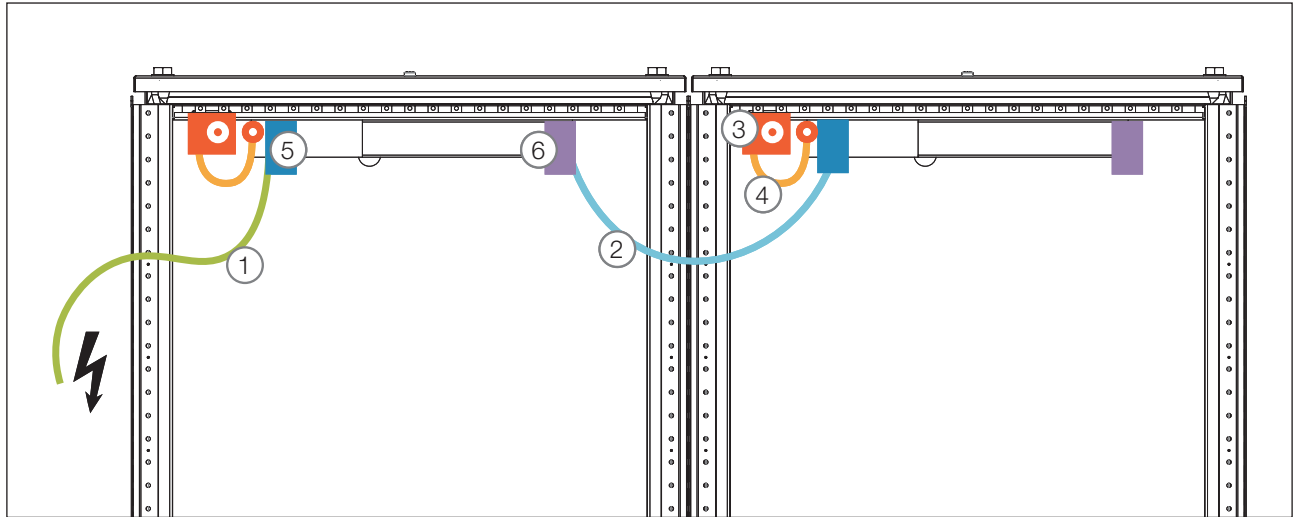


Earthing connections for all enclosure parts

Eldon offers a wide range of earthing connectors and cables to guarantee electrical continuity throughout the whole enclosure, for safe guarding of people..



Eldon Lighting System



- ① Connection cable for infeed (includes connector 5)
- ② Connection cable for through-wiring /infeed (includes connectors 5 and 6)
- ③ Door-operated switch
- ④ Connection cable for door-operated switch
- ⑤ Connector for infeed
- ⑥ Connector for through-wiring

| | ① | ② | ③ | ④ | ⑤ | ⑥ |
|-------------|-------|-------|------------|------|-------|-------|
| LTS | | | ADSW / DSW | **** | | |
| LTSL | CLF L | LTP L | ADSW / DSW | **** | COF L | COM L |
| LTSM | | | ** | ** | | |
| LTLN | CLF | LTP | LDSW | *** | COF | COM |
| TLC | * | | TLCS | *** | | |
| TLCL | * | | TLCS | *** | | |
| TL | * | * | ADSW / DSW | **** | | |

* Delivery of the light includes the part already.

** LTSM includes movement sensor, so no door operated switch is required.

*** Connection cable for door-operated door switch is included in the delivery of the door-operated switch.

**** Light does not include a dedicated socket to connect a connection cable for door-operated switch. User needs to connect the door switch in between the main leads instead.

07

General Accessories



General Accessories

Enclosure Light, LTS

- Description:** Energy saving lighting system suitable for all types of panels and enclosures, especially where space is at a premium. It is made of light grey plastic (ABS-PC) according to UL94 V-0. The lamp can be mounted on its narrow or broad surface using screws, or magnetically in any position in a mild steel enclosure. It has electronic ballast, and its life service is of 10000 h. An integrated electrical socket enables the use of additional appliances and it is provided with a protection cap.
- Lamp type:** Compact fluorescent lamp, 2G7 socket.
- Luminosity:** 900 Lm.
- Power consumption:** 11 W.
- Operating temperature:** -20°C to +50°C.
- Dimensions:** 345 x 91 x 40 mm.
- Connections:** Terminal 2.5 mm² with cable clamp, torque 0.8Nm max.

| Operating Voltage | Socket Type | Approvals | Item no. |
|-------------------|----------------|----------------|------------|
| 230 V, 50/60 Hz | Schuko | CE, EAC | LTS11 |
| 230 V, 50/60 Hz | France/Belgium | CE, EAC | LTS11FR |
| 230 V, 50/60 Hz | Switzerland | CE, EAC | LTS11CH |
| 230 V, 50/60 Hz | UK/Ireland | CE, EAC | LTS11UK |
| 120 V, 50/60 Hz | USA/Canada | CE, EAC, cULus | LTS11USAUL |



Enclosure light with movement sensor, LTSM

| | |
|-------------------------------|---|
| Description: | Energy saving lighting system suitable for all types of panels and enclosures, especially where space is at a premium. The movement sensor eliminates the need for a door switch. It is made of light grey plastic (ABS-PC) according to UL94 V-0. The lamp can be mounted on its narrow or broad surface using screws, or magnetically in any position in a steel enclosure. It has electronic ballast, and its life service is of 10000 h. An integrated electrical socket enables the use of additional appliances and it is provided with a protection cap. |
| Lamp type: | Compact fluorescent lamp, 2G7 socket. |
| Luminosity: | 900 Lm. |
| Power consumption: | 11 W. |
| Operating voltage: | 230 V, 50/60 Hz. |
| Operating temperature: | -20 °C to +50 °C. |
| Dimensions: | 345 x 91 x 40 mm. |
| Socket type: | Schuko. |
| Connections: | Terminal 2.5 mm ² with cable clamp, torque 0.8Nm max. |
| Approvals: | CE, EAC. |

| Item no. |
|----------|
| LTSM11 |



General Accessories

LED light, LTSL

- Description:** Energy saving lighting system suitable for all types of panels and enclosures, especially where space is at a premium. It is made of transparent plastic. This lamp has a very long service life (around 60000 h.) thanks to the use of LED technology. The power output allows up to 10 lights to be connected to each other (daisy chain) with both the input and output plugs snap-locking into their sockets.
- Lamp:** LED, 120° angle of radiation.
- Luminosity:** 400 Lm.
- Power consumption:** 5 W max.
- Operating voltage:** 100-240 V, 50/60 Hz.
- Operating temperature:** -30 °C to +60 °C.
- Connections:** Connectors with snap lock for power supply and power output.
- Approvals:** CE, EAC, UL.

| Mounting | Dimensions | Item no. |
|---------------|------------------|----------|
| Magnet fixing | 351 x 34 x 32 mm | LTSL5 |
| Screw fixing | 351 x 36 x 52 mm | LTSL5S |



Power cable for LTSL lights, CLF L

- Description:** Feed cable with female connector on one end to connect to a LTSL light and an open end for the connection to power.
- Length:** 2 m.
- Approvals:** CE, EAC.
- Pack quantity:** 5 pieces.

| Item no. |
|----------|
| CLF2005L |



Connecting cable for LTSL lights, LTP L

Description: Plug-in connecting cable between LTSL light units.
Length: 1 m.
Approvals: CE, EAC.
Pack quantity: 5 pieces.

| |
|-----------------|
| Item no. |
| LTP100L |



Female connectors for LTSL lights, COF L

Approvals: CE, EAC.
Pack quantity: Pack of 5 female connectors for LTSL lights.

| |
|-----------------|
| Item no. |
| COF05L |



Male connectors for LTSL lights, COM L

Approvals: CE, EAC.
Pack quantity: Pack of 5 male connectors.

| |
|-----------------|
| Item no. |
| COM05L |



General Accessories

Enclosure light, LTLN

- Description:** Fluorescent lamp especially designed to fit onto the inside hole pattern of an enclosure's frame. The housing of the light is made of mild steel, powder coated in RAL 7035. The power output allows lights to be connected to each other (daisy chain). An integrated electrical socket enables the use of additional appliances.
- Lamp type:** Fluorescent lamp T8.
- Operating temperature:** -10 °C to +40 °C.
- Socket type:** Schuko. Other socket types available on request.
- Connection:** Connectors for power supply, power output, and door switch.
- Approvals:** CE, GOST.
- Delivery:** 1 light.

| H | W | D | Luminosity | Power consumption | Voltage | Frequency | Item no. |
|----|-----|-----|------------|-------------------|---------|-----------|----------|
| 42 | 475 | 115 | 700 Lm | 14W | 120 V | 60 Hz | LTLN1416 |
| | 475 | 115 | 700 Lm | 14W | 230 V | 60 Hz | LTLN1426 |
| | 475 | 115 | 700 Lm | 14W | 230 V | 50 Hz | LTLN1425 |
| 43 | 700 | 115 | 1350 Lm | 18W | 230 V | 50 Hz | LTLN1825 |
| | 700 | 115 | 1350 Lm | 18W | 120 V | 60 Hz | LTLN1816 |
| | 700 | 115 | 1350 Lm | 18W | 230 V | 60 Hz | LTLN1826 |



Light cover for LTLN lights, LTLNC

- Description:** Polycarbonate cover for additional protection of the lamp in LTLN lights.
- Approvals:** EAC.

| Description | Item no. |
|---------------------|----------|
| For LTLN14xx lights | LTLNC14 |
| For LTLN18xx lights | LTLNC18 |



Door switch with cable for LTLN lights, LDSW

| | |
|-------------------------|--|
| Description: | Door switch to be installed directly onto LTLN lights. It includes a mounting plate that is placed onto the LTLN light which allows the switch to be positioned at variable depths. A door switch connection cable is also included. No additional products are needed in order to mount the door switch onto the light. |
| Approvals: | CE, EAC. |
| Pack quantity: | 1 piece, 1 connection door switch connection cable and mounting accessories. |
| Switch capacity: | 6A / 230V. |

| | |
|--|-----------------|
| | Item no. |
| | LDSW01 |



Power cable for LTLN lights, CLF

| | |
|-----------------------|---|
| Description: | Feed cable with female connector on one end to connect to a LTLN light and an open end for the connection to power. |
| Length: | 3 m. |
| Approvals: | CE, EAC. |
| Pack quantity: | 5 pieces. |

| | |
|--|-----------------|
| | Item no. |
| | CLF3005 |



Power cable for LTLN lights, CLFO

| | |
|-----------------------|--|
| Description: | Orange feed cable with female connector on one end to connect to a LTLN light and an open end for the connection to power. |
| Length: | 3.5 m. |
| Approvals: | CE, EAC. |
| Pack quantity: | 5 pieces. |

| | |
|--|-----------------|
| | Item no. |
| | CLFO3005 |



General Accessories

Connecting cable for LTLN lights, LTP

Description: Plug-in connecting cable between LTLN light units.
Approvals: CE, EAC.
Pack quantity: 5 pieces.

| Length | Item no. |
|---------|----------|
| 600 mm | LTP600 |
| 1000 mm | LTP1000 |



Connecting cable for LTLN lights, LTPO

Description: Orange plug-in connecting cable between LTLN light units.
Length: 1 m.
Approvals: CE.
Pack quantity: 5 pieces.

| Item no. |
|----------|
| LTPO1000 |



Female connectors for LTLN lights, COF

Approvals: CE, EAC.
Pack quantity: Pack of 5 female connectors for LTLN lights.

| Item no. |
|----------|
| COF05 |



Male connectors for LTLN lights, COM

Approvals: CE, EAC.
Pack quantity: Pack of 5 male connectors for LTLN lights.

Item no.

COM05



Door switch cable for LTLN lights, DSWC

Description: Door switch connecting cable to be used with LTLN lights. Door switch needs to be ordered separately.
Length: 1 m.
Approvals: CE, EAC.
Pack quantity: 5 pieces.

Item no.

DSWC1005



General Accessories

Compact design light, TLC

- Description:** Lighting system with a compact design, suitable for all types of enclosures or racks. It has three possible fixing possibilities: magnetically, screw mounting with a variable distance between holes and/or snap-into 19" rack. It is an electronically operated device and has a service life of 10000 h. The body of the lighting system is made of PC-ABS. An integrated connector allows the activation of the lamp by a door switch by using the TLCS product without performing any additional wiring. It is provided with a protection cap made of PC and the colour of the light is cold white.
- Lamp type:** Fluorescent lamp T5/G5.
- Luminosity:** 480 Lm.
- Power consumption:** 8 W.
- Operating temperature:** -15 °C to +45 °C.
- Dimensions:** 448 x 54.5 x 26 mm.
- Connections:** 2x0.75 mm² open end cable (1.5 m long), 2x0.75 mm² female mini-connector for door switch use.
- Approvals:** CE, EAC.
- Delivery:** 1 light with fix mounted connection cable, integrated magnets and mounting screws.

| Operating voltage | Finish | Item no. |
|---------------------|-----------------------|-----------|
| 230 V, 50/60 Hz | Light grey (RAL 7035) | TLC87035 |
| 100-240 V, 50/60 Hz | Light grey (RAL 7035) | TLC87035V |
| 230 V, 50/60 Hz | Black (RAL 9005) | TLC89005 |
| 100-240 V, 50/60 Hz | Black (RAL 9005) | TLC89005V |



Compact design LED light, TLCL

- Description:** Lighting system with a compact design, suitable for all types of enclosures or racks. It has three possible fixing possibilities: magnetically, screw mounting with a variable distance between holes and/or snap-into 19" rack. This lamp has a very long service life (around 50,000 h.) due to the use of LED technology. The body of the lighting system is made of PC-ABS. An integrated connector allows the activation of the lamp by a door switch by using the TLCS product without performing any additional wiring. The led-tube is made of PC and the colour of the light is white.
- Lamp type:** High Power LEDs.
- Luminosity:** 945 Lm.
- Power consumption:** 7.2 W.
- Operating temperature:** -20 °C to +50 °C.
- Dimensions:** 448 x 54.5 x 26 mm.
- Connections:** 2x0.75 mm² open end cable (1.5 m long), 2x0.75 mm² mini-connector for door switch use.
- Approvals:** CE, EAC.
- Delivery:** 1 light with fix mounted connection cable, integrated magnets and mounting screws.

| Operating voltage | Finish | Item no. |
|------------------------|-----------------------|--------------|
| 220-240 V AC, 50/60 Hz | Light grey (RAL 7035) | TLCL87035 |
| 24 V DC | Light grey (RAL 7035) | TLCL87035-24 |
| 220-240 V AC, 50/60 Hz | Black (RAL 9005) | TLCL89005 |
| 24 V DC | Black (RAL 9005) | TLCL89005-24 |



Door switch with cable for TLC / TLCL lights, TLCS

- Description:** Door switch made of PC-ABS for the TLC and TLCL lights. Can be mounted on the inside hole pattern of the enclosure's frame in floor standing enclosures by means of a plug-in and play principle. A very slim design is guaranteed due to the integrated micro switch. This leaves a maximum aperture space. The switch is supplied with a pre-wired cable. The auto positioning system of the door switch assures that the switch is always in the correct position.
- Length:** 1.5 m.
- Approvals:** CE, EAC.
- Pack quantity:** 1 piece with mounting accessories.

| Description | Item no. |
|------------------------|----------|
| Door switch with cable | TLCS01 |
| Cable for door switch | TLCS600 |



General Accessories

19" Blind 1U, TLCF

- Description:** Metal sheet to be used with TLC/TLCL lights to fill up one height unit in 19" racks.
- Dimensions:** 485 x 45 x 6 mm.
- Pack quantity:** 1 piece.

| Finish | Item no. |
|-----------------------|----------|
| Light grey (RAL 7035) | TLCF7035 |
| Black (RAL 9005) | TLCF9005 |



Small enclosure light, TL

- Description:** Energy saving and cost-effective lightning system to be fixed on its rear side. The body of the light is made of polycarbonate, the end caps of ABS and the protection cap provided is made of PMMA. The power output allows lights to be connected to each other by using the serial cable included or the use of additional appliances, up to a maximum power of 100 W. The colour of the lighting system is white.
- Lamp type:** Fluorescent lamp T5 / G5.
- Operating voltage:** 220-240 V, 50 Hz.
- Operating temperature:** -5 °C to +45 °C.
- Connections:** 2x0.75 mm² connector for power supply, 2x0.75mm² connector for power output.
- Approvals:** CE, EAC.
- Delivery:** 1 light with power cable 1.75 m long, one connecting cable 140 mm long to connect lights to each other, and mounting material.

| Luminosity | Power consumption | Dimensions | Item no. |
|------------|-------------------|------------------|-----------|
| 290 Lm | 6 W | 269 x 43 x 28 mm | TL2001-6 |
| 950 Lm | 13 W | 574 x 43 x 28 mm | TL2001-13 |



Door switch, DSW

- Description:** Door switch to activate any electrical device (lighting, signalling, alarms, etc.). Can be mounted after installing the enclosure thereby keeping the door opening free. Fixed (without screws) on the inside hole pattern of the enclosure's frame in floor standing enclosures. Cable entry M20.
- Switch capacity:** 6A / 230V.
- Approvals:** CE, CSA, EAC, UL.
- Pack quantity:** 1 piece with mounting accessories.

| Item no. |
|----------|
| DSW01 |



Door switch, ADSW

- Description:** Door switch to activate any electrical device (lighting, signalling, alarms, etc.) designed for wall mounted enclosures. Cable entry M20. In stainless steel enclosures, machining is required.
- Switch capacity:** 6A / 230V.
- Approvals:** CE, CSA, EAC, UL.
- Pack quantity:** 1 piece with mounting accessories.

| Item no. |
|----------|
| ADSW01 |



Power socket with integrated fuse, LPS

- Description:** DIN rail mounted electrical socket. Pressure clamp connection for easy and quick wiring.
- Dimensions:** 92 mm x 62 mm x 48 mm.
- Connection:** 3 pressure clamps for stranded and rigid wire 0.5-2.5 mm². Integrated fuse 6,3A 5x20 mm.
- Finish:** Light grey.
- Material:** Plastic UL 94 V-0.
- Pack quantity:** 1 piece.

| Socket type | Item no. |
|----------------|----------|
| Schuko | LPS10 |
| France/Belgium | LPS10FR |
| Switzerland | LPS10CH |
| UK/Ireland | LPS10UK |
| USA/Canada | LPS10USA |



DIN rails, PP

- Description:** According to EN 60715. Hole pattern 18 x 5.2 mm.
- Material:** Galvanized steel
- Pack quantity:** 15x2 m.

| Description | Dim | Type | Item no. |
|---------------|----------|-------|----------|
| With holes | 5 x 15 | Omega | PP0515H |
| Without holes | 7.5 x 35 | Omega | PP0735 |
| With holes | 7.5 x 35 | Omega | PP0735H |
| Without holes | 15 x 32 | G | PP1532 |
| With holes | 15 x 32 | G | PP1532H |
| Without holes | 15 x 35 | Omega | PP1535 |
| With holes | 15 x 35 | Omega | PP1535H |



General Accessories

Mounting rails, CP

Description: Installation profile with and without 25 mm hole pattern. Add GLM sliding nuts for easy installation of components.

Material: Galvanized steel.

Pack quantity: 10 x 2 m.

| Description | Dim | Item no. |
|---------------|---------|----------|
| With holes | 10 x 20 | CP1020 |
| Without holes | 10 x 20 | CP1020U |
| With holes | 20 x 20 | CP2020 |
| Without holes | 20 x 20 | CP2020U |
| With holes | 20 x 40 | CP2040 |
| Without holes | 20 x 40 | CP2040U |



Sliding nuts for mounting rails, GLM

Description: Sliding nuts to be used with CP mounting rails and CLPF mounting profiles for easy installation of components.

Material: Zinc plated steel.

Pack quantity: 50 pieces.

| Thread | To be used with | Item no. |
|--------|----------------------------------|----------|
| M6 | CP1020, CP1020U, CP2020, CP2020U | GLM20-6P |
| M8 | CP1020, CP1020U, CP2020, CP2020U | GLM20-8P |
| M6 | CP2040, CP2040U, CLPF profiles | GLM40-6P |
| M8 | CP2040, CP2040U, CLPF profiles | GLM40-8P |



Extrude-tite screws, CNT

Description: Torx extrude-tite screws for fitting accessories, click in profiles, earthing etc.

Pack quantity: 250 pieces.

| Thread | Item no. |
|--------|----------|
| M5 | CNT05 |
| M6 | CNT06 |



Screws for clip-on cage nuts, CNS

Description: Socket head screws M6x12 and M8x12 for clip-on cage nuts.

Pack quantity: 250 pieces.

| Thread | Item no. |
|--------|----------|
| M6 | CNS612 |
| M8 | CNS812 |

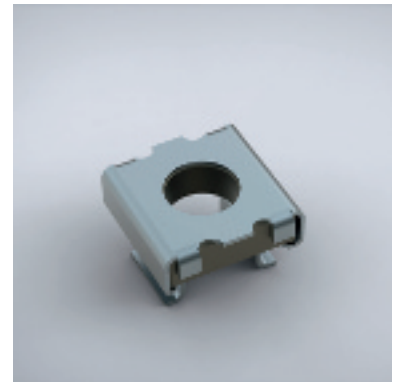


Cage nuts, CNM

Description: Cage nuts designed for universal use on the enclosure frame profiles and the profiles system.

Pack quantity: 50 pieces.

| Thread | Item no. |
|--------|----------|
| M6 | CNM615 |
| M8 | CNM815 |



Paint can, BFP

Description: Air drying paint, for repairs and touch-up of powder coated or wet painted surfaces.

Pack quantity: 1 spray can of 400 ml.

| Colour | RAL Colour | Item no. |
|-------------|------------|----------|
| Black | RAL 7022 | BFP7022 |
| Mid grey | RAL 7030 | BFP7030 |
| Pebble grey | RAL 7032 | BFP7032 |
| Light grey | RAL 7035 | BFP7035 |



Cleaner for stainless steel, SSC

Description: A special in-depth cleaner for stainless steel.

Pack quantity: 1 bottle of stainless steel cleaner of 250 ml, 1 bottle of surface protector, 1 sponge.

| Item no. |
|----------|
| SSC01 |



General Accessories

Earthing cable, ECFA

- Description:** For earthing and potential compensation between metallic parts.
- Material:** 6 mm² copper wire (yellow-green).
- Pack quantity:** 10 pieces.
- Mounting requirement:** Add connection set ECF for fixing cable to painted frame.

| Length | Connection size | Item no. |
|--------|-----------------|----------|
| 220 mm | M6/M8 | ECFA220 |
| 300 mm | M8/M8 | ECFA300 |



Earthing strap, ECFE

- Description:** For earthing and potential compensation between panels, parts and enclosure's frame.
- Length:** 300 mm.
- Material:** Tinned electrolytic copper 0.15 mm wire.
- Working temperature:** Up to 105°C.
- Pack quantity:** 10 pieces.
- Mounting requirement:** Add ECF connection set for fixing strap to painted frame.

| Cross sectional area | Holes diam. | Current (A) | Item no. |
|----------------------|-------------|-------------|----------|
| 16 mm ² | 8.5 | 120A | ECFE1630 |
| 25 mm ² | 10.5 | 150A | ECFE2530 |



Earthing connection for panels, ECP

- Description:** Earthing connection for fixing the earthing straps and cables to panels, mounting plates or profiles.
- Pack quantity:** 10 sets.

| Size | Item no. |
|------|----------|
| M6 | ECP06 |
| M8 | ECP08 |



Earthing connections for frame, ECF

Description: Earthing connections for fixing the earthing straps and cables to the enclosure's frame.

Pack quantity: 10 sets.

| Size | Item no. |
|------|----------|
| M6 | ECF06 |
| M8 | ECF08 |



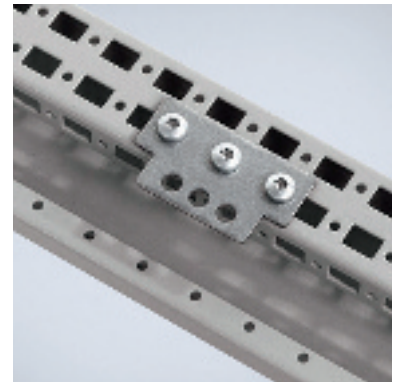
Central earthing point, ECFP

Description: Provides earthing contact surface on horizontal or vertical frame profiles. For a secure earthing point with multiple connections. Tested for max 40 kA (70 ms).

Material: Galvanized steel.

Pack quantity: 5 central earthing points with mounting accessories. Earthing kit M8 included for the three holes.

| Item no. |
|----------|
| ECFP08 |



Document pocket, DRA

Description: Self adhesive, for DIN A4.

Usable depth: 30 mm.

Material: Thermoplastic.

Finish: RAL 7035.

Pack quantity: 1 document pocket with double sided tape.

| Item no. |
|----------|
| DRA04 |

